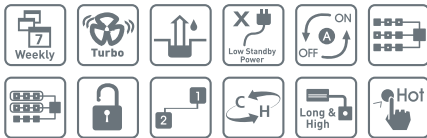


Ceiling Cassette

Heat pump H Inverter



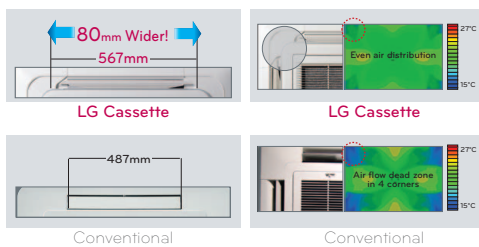
UT12H
UT18H



Features and Benefits

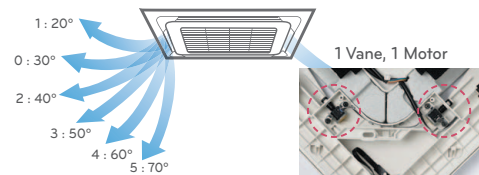
Wide jet air flow

Wider vanes help give your room a more even distribution of airflow. No more hot and cold patches.



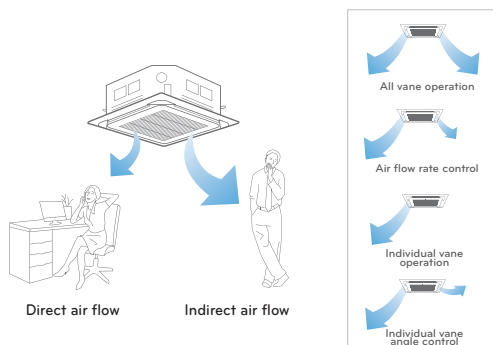
A motor for each vane

Each of the four vanes on the cassette has its own motor. It gives you complete control in air circulation and means that you do not waste energy powering the whole unit when you are only using one vane.



Independent vane operation

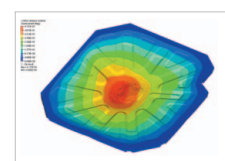
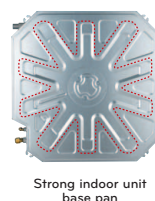
The different vanes on our cassette units can be controlled independently. So whether you want to target airflow to a specific place in your room or would prefer a more balanced air circulation, the cassette has a setting to suit.



Sshh...Our cassette units are extremely quiet

We have fine-tuned our cassette units to make them as quiet as possible.

- BLDC compressor and aerodynamic fan reduce noise
- Air outlet redesign makes for more streamlined airflow
- Anti-vibration design removes resonance from the unit.



Ceiling Cassette

Heat pump H Inverter



UT12H

UT18H



UU12WH

UU18WH

Specifications

Model	Indoor Unit Fascia Panel		UT12H NP1 PT-UMC	UT18H NP1 PT-UMC
Cooling Capacity ¹	Min-Rated-Max	kW	1.40~3.50~4.20	2.00~5.00~5.50
Heating Capacity ¹	Min-Rated-Max	kW	1.60~4.2~5.00	2.20~5.00~6.05
Power Input	Cooling (Rated-Max)	kW	0.99 ~ 1.44	1.35 ~ 1.89
	Heating (Rated-Max)	kW	1.04 ~ 1.6	1.35 ~ 2.02
EER		W/W	3.54	3.70
COP		W/W	4.04	4.07
Energy Efficiency Class	Cooling/Heating		A/A	A/A
Annual energy consumption ²	Cooling	kWh	495	675
Power Supply	Ø / V / Hz		1 / 220-240 / 50	1 / 220-240 / 50
Air Flow Rate	Indoor, H/M/L	m3/min	13 / 12 / 10	17 / 15 / 13
Sound Level	Indoor, H/M/L	dB(A)±3	35 / 33 / 31	39 / 37 / 34
Operation Range	Cooling (Indoor)	°C	18~30	18~30
	Cooling (Outdoor)	°C	-10~48	-10~48
	Heating (Indoor)	°C	16~30	16~30
	Heating (Outdoor)	°C	-18~18	-18~18
Running Current	Cooling/Heating	A	0.6 / 0.6	0.6 / 0.6
Power Supply to...			Outdoor	Outdoor
Moisture Removal Rate		l/h	1.3	2.1
Drain Hose (O.D / I.D.)		mm	32 / 25	32 / 25
Dimensions	Indoor (WxHxD)	mm	840x204x840	840x204x840
	Fascia (WxHxD)	mm	950x25x950	950x25x950
Net Weight	Indoor	kg	21	21
	Fascia	kg	5	5
Accessory Options	IR Remote		PQWRHDF0	PQWRHDF0
	Plasma Filter		PTPKMO	PTPKMO
	Auto Elevation Grille		PTEGMO	PTEGMO
	Dry Contact		PQDSB	PQDSB
Model	Outdoor Unit		UU12WH UE1	UU18WH UE1
Power Supply	Ø / V / Hz		1 / 220-240 / 50	1 / 220-240 / 50
Running Current	Cooling/Heating	A	4.4 / 4.6	6.0 / 6.7
Starting Current	Cooling/Heating	A	< 4.4 / 4.6	< 6.0 / 6.7
Suggested Circuit Breaker	Type C	A	10	16
Power Supply to...			Outdoor	Outdoor
Interconnecting Cable			3-Core + Earth	3-Core + Earth
Compressor	Type		Twin Rotary	Twin Rotary
Air Flow Rate	Outdoor, Max	m3/min	50	58
Sound Level	Cooling/Heating	dB(A)±3	48 / 48	47 / 50
	Night Operation	dB(A)±3	45	39
Dimensions	Outdoor (WxHxD)	mm	870x655x320	870x808x320
Net Weight	Outdoor	kg	46	58
Refrigerant & Charge	R410A	g	1250	2000
Additional Refrigerant charge		g/m	20 (>10.0m)	20 (>10.0m)
Piping Connections	Liquid Side	mm (in)	6.35 (1/4)	6.35 (1/4)
	Gas Side	mm (in)	9.52 (3/8)	12.7 (1/2)
Piping Length (Min/Max)		m	5 / 30	5 / 50
Max. Elevation Difference		m	20	30
Accessory Options	PI485 Interface		PMNFP14A028	PMNFP14A0

Note: 1. Capacities are based on the following conditions:
 Cooling: - Indoor Temperature 27°C DB /19°C WB
 - Outdoor Temperature 35°C DB /24°C WB
 Heating: - Indoor Temperature 20°C DB / 15°C WB
 - Outdoor Temperature 7°C DB / 6°C WB

Note: 2. Annual energy consumption: based on average use of 500 running hours per year at nominal condition

Ceiling Cassette

Heat pump H Inverter



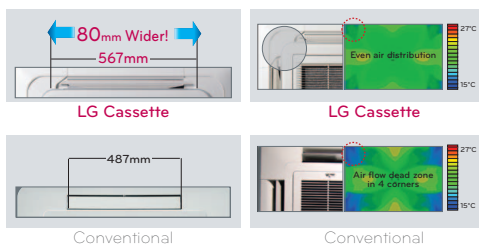
UT21H
UT24H



Features and Benefits

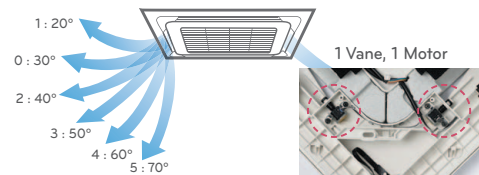
Wide jet air flow

Wider vanes help give your room a more even distribution of airflow. No more hot and cold patches.



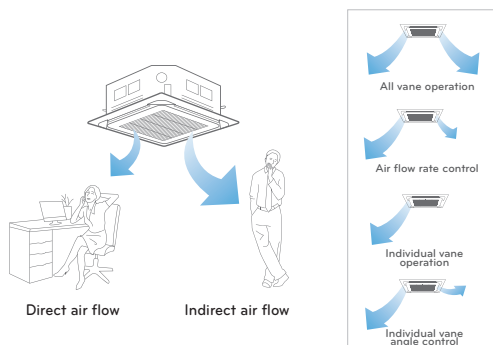
A motor for each vane

Each of the four vanes on the cassette has its own motor. It gives you complete control in air circulation and means that you do not waste energy powering the whole unit when you are only using one vane.



Independent vane operation

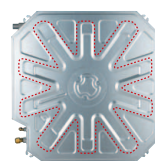
The different vanes on our cassette units can be controlled independently. So whether you want to target airflow to a specific place in your room or would prefer a more balanced air circulation, the cassette has a setting to suit.



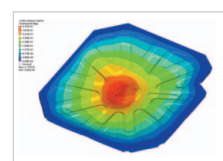
Sshh...Our cassette units are extremely quiet

We have fine-tuned our cassette units to make them as quiet as possible.

- BLDC compressor and aerodynamic fan reduce noise
- Air outlet redesign makes for more streamlined airflow
- Anti-vibration design removes resonance from the unit.



Strong indoor unit base pan



DECA web structure design

Ceiling Cassette

Heat pump H Inverter



UU21WH / UU24WH

UT21H
UT24H

Specifications

Model	Indoor Unit Fascia Panel		UT21H NN1 PT-UMC	UT24H NN1 PT-UMC
Cooling Capacity ¹	Min-Rated-Max	kW	2.80~6.00~8.00	2.80~7.00~8.40
Heating Capacity ¹	Min-Rated-Max	kW	3.20~7.00~9.00	3.20~8.00~9.40
Power Input	Cooling (Rated-Max)	kW	1.53 ~ 2.60	1.92 ~ 2.93
	Heating (Rated-Max)	kW	1.66 ~ 2.70	1.93 ~ 2.9
EER		W/W	3.92	3.65
COP		W/W	4.22	4.15
Energy Efficiency Class	Cooling/Heating		A/A	A/A
Annual energy consumption ²	Cooling	kWh	765	960
Power Supply		Ø / V / Hz	1 / 220-240 / 50	1 / 220-240 / 50
Air Flow Rate	Indoor, H/M/L	m3/min	21 / 18 / 16	21 / 18 / 16
Sound Level	Indoor, H/M/L	dB(A)±3	40 / 38 / 36	40 / 38 / 36
Operation Range	Cooling (Indoor)	°C	18~30	18~30
	Cooling (Outdoor)	°C	-10~48	-10~48
	Heating (Indoor)	°C	16~30	16~30
	Heating (Outdoor)	°C	-18~18	-18~18
Running Current	Cooling/Heating	A	0.6 / 0.6	0.6 / 0.6
Power Supply to...			Outdoor	Outdoor
Moisture Removal Rate		l/h	2.7	2.7
Drain Hose (O.D / I.D.)		mm	32 / 25	32 / 25
Dimensions	Indoor (WxHxD)	mm	840x246x840	840x246x840
	Fascia (WxHxD)	mm	950x25x950	950x25x950
Net Weight	Indoor	kg	23.5	23.5
	Fascia	kg	5	5
Accessory Options	IR Remote		PQWRHDF0	PQWRHDF0
	Plasma Filter		PTPKMO	PTPKMO
	Auto Elevation Grille		PTEGMO	PTEGMO
	Dry Contact		PQDSB	PQDSB

Model	Outdoor Unit		UU21WH U41	UU24WH U41
Power Supply		Ø / V / Hz	1 / 220-240 / 50	1 / 220-240 / 50
Running Current	Cooling/Heating	A	7.6 / 7.7	9.5 / 9.0
Starting Current	Cooling/Heating	A	< 7.6 / 7.7	< 9.5 / 9.0
Suggested Circuit Breaker	Type C	A	16	20
Power Supply to...			Outdoor	Outdoor
Interconnecting Cable			3-Core + Earth	3-Core + Earth
Compressor	Type		Twin Rotary	Twin Rotary
Air Flow Rate	Outdoor, Max	m3/min	58	58
Sound Level	Cooling/Heating	dB(A)±3	47 / 50	47 / 50
	Night Operation	dB(A)±3	44	44
Dimensions	Outdoor (WxHxD)	mm	950x834x330	950x834x330
Net Weight	Outdoor	kg	63	63
Refrigerant & Charge	R410A	g	2200	2200
Additional Refrigerant charge		g/m	40 (>10.0m)	40 (>10.0m)
Piping Connections	Liquid Side	mm (in)	9.52 (3/8)	9.52 (3/8)
	Gas Side	mm (in)	15.88 (5/8)	15.88 (5/8)
Piping Length (Min/Max)		m	5 / 50	5 / 50
Max. Elevation Difference		m	30	30
Accessory Options	PI485 Interface		PMNFP14A0	PMNFP14A0

Note: 1. Capacities are based on the following conditions:
Cooling: - Indoor Temperature 27°C DB /19°C WB
- Outdoor Temperature 35°C DB /24°C WB
Heating: - Indoor Temperature 20°C DB / 15°C WB
- Outdoor Temperature 7°C DB / 6°C WB

Note: 2. Annual energy consumption: based on average use of 500 running hours per year at nominal condition

Ceiling Cassette

Heat pump H Inverter



UT36H

UT42H

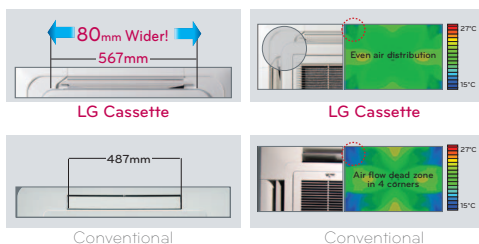
UT48H



Features and Benefits

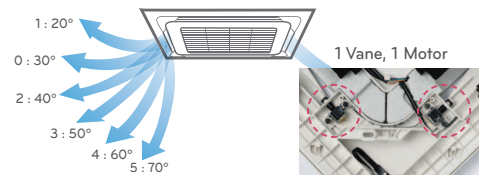
Wide jet air flow

Wider vanes help give your room a more even distribution of airflow. No more hot and cold patches.



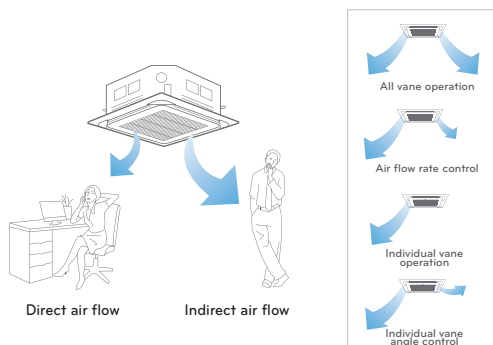
A motor for each vane

Each of the four vanes on the cassette has its own motor. It gives you complete control in air circulation and means that you do not waste energy powering the whole unit when you are only using one vane.



Independent vane operation

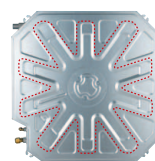
The different vanes on our cassette units can be controlled independently. So whether you want to target airflow to a specific place in your room or would prefer a more balanced air circulation, the cassette has a setting to suit.



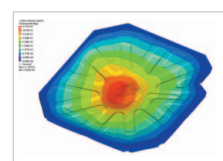
Sshh...Our cassette units are extremely quiet

We have fine-tuned our cassette units to make them as quiet as possible.

- BLDC compressor and aerodynamic fan reduce noise
- Air outlet redesign makes for more streamlined airflow
- Anti-vibration design removes resonance from the unit.



Strong indoor unit base pan



DECA web structure design

Ceiling Cassette

Heat pump H Inverter



UU36WH / UU42WH / UU48WH

UT36H
UT42H
UT48H

Specifications

Model	Indoor Unit Fascia Panel		UT36H NM1 PT-UMC	UT42H NM1 PT-UMC	UT48H NM1 PT-UMC
Cooling Capacity ¹	Min-Rated-Max	kW	4.50-10.00-13.00	5.00-12.50-14.90	5.50-13.40-16.00
Heating Capacity ¹	Min-Rated-Max	kW	4.90-11.20-14.00	5.50-14.00-16.80	6.40-15.50-17.90
Power Input	Cooling (Rated-Max)	kW	2.60 ~ 4.42	3.66 ~ 5.12	4.15 ~ 5.56
	Heating (Rated-Max)	kW	2.51 ~ 4.60	3.41 ~ 5.03	4.07 ~ 5.40
EER		W/W	3.85	3.42	3.23
COP		W/W	4.46	4.11	3.81
Energy Efficiency Class	Cooling/Heating		A/A	A/A	A/A
Annual energy consumption ²	Cooling	kWh	1300	1830	2075
Power Supply	Ø / V / Hz		1 / 220-240 / 50	1 / 220-240 / 50	1 / 220-240 / 50
Air Flow Rate	Indoor, H/M/L	m3/min	32 / 26.1 / 20.2	32 / 26.7 / 21.5	32 / 27.4 / 22.8
Sound Level	Indoor, H/M/L	dB(A)±3	47 / 45 / 42	47 / 45 / 42	47 / 45 / 42
Operation Range	Cooling (Indoor)	°C	18-30	18-30	18-30
	Cooling (Outdoor)	°C	-10-48	-10-48	-10-48
	Heating (Indoor)	°C	16-30	16-30	16-30
	Heating (Outdoor)	°C	-18-18	-18-18	-18-18
Running Current	Cooling/Heating	A	0.72 / 0.72	0.72 / 0.72	0.72 / 0.72
Power Supply to...			Outdoor	Outdoor	Outdoor
Moisture Removal Rate		l/h	2.7	3.6	3.6
Drain Hose (O.D. / I.D.)		mm	32 / 25	32 / 25	32 / 25
Dimensions	Indoor (WxHxD)	mm	840x288x840	840x288x840	840x288x840
	Fascia (WxHxD)	mm	950x25x950	950x25x950	950x25x950
Net Weight	Indoor	kg	28	28	28
	Fascia	kg	5	5	5
Accessory Options	IR Remote		PQWRHDF0	PQWRHDF0	PQWRHDF0
	Plasma Filter		PTPKMO	PTPKMO	PTPKMO
	Auto Elevation Grille		PTEGMO	PTEGMO	PTEGMO
	Dry Contact		PQDSB	PQDSB	PQDSB

Model	Outdoor Unit		UU36WH U31	UU42WH U31	UU48WH U31
Power Supply	Ø / V / Hz		1 / 220-240 / 50	1 / 220-240 / 50	1 / 220-240 / 50
Running Current	Cooling/Heating	A	11.5 / 11.3	16.8 / 15.0	18.7 / 18.0
Starting Current	Cooling/Heating	A	< 11.5 / 11.3	< 16.8 / 15.0	< 18.7 / 18.0
Suggested Circuit Breaker	Type C	A	25	32	40
Power Supply to...			Outdoor	Outdoor	Outdoor
Interconnecting Cable			3-Core + Earth	3-Core + Earth	3-Core + Earth
Compressor	Type		Twin Rotary	Twin Rotary	Twin Rotary
Air Flow Rate	Outdoor, Max	m3/min	55 x2	55 x2	55 x2
Sound Level	Cooling/Heating	dB(A)±3	51 / 53	51 / 53	51 / 53
	Night Operation	dB(A)±3	47	47	47
Dimensions	Outdoor (WxHxD)	mm	950x1380x330	950x1380x330	950x1380x330
Net Weight	Outdoor	kg	103	103	103
Refrigerant & Charge	R410A	g	3600	3600	3600
Additional Refrigerant charge		g/m	40 (>7.5m)	40 (>7.5m)	40 (>7.5m)
Piping Connections	Liquid Side	mm (in)	9.52 (3/8)	9.52 (3/8)	9.52 (3/8)
	Gas Side	mm (in)	15.88 (5/8)	15.88 (5/8)	15.88 (5/8)
Piping Length (Min/Max)		m	5 / 75	5 / 75	5 / 75
Max. Elevation Difference		m	30	30	30
Accessory Options	PI485 Interface		PMNFP14AO	PMNFP14AO	PMNFP14AO

Note: 1. Capacities are based on the following conditions:
Cooling: - Indoor Temperature 27°C DB /19°C WB
- Outdoor Temperature 35°C DB /24°C WB
Heating: - Indoor Temperature 20°C DB / 15°C WB
- Outdoor Temperature 7°C DB / 6°C WB

Note: 2. Annual energy consumption: based on average use of 500 running hours per year at nominal condition

Ceiling Cassette

Heat pump H Inverter
(3 Phase)

UT36H

UT42H

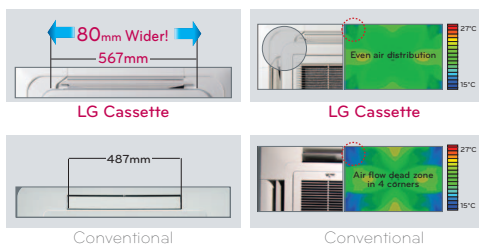
UT48H



Features and Benefits

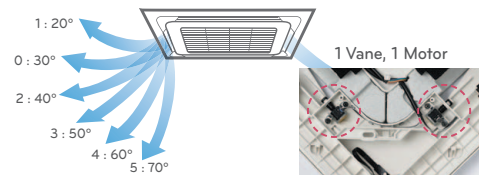
Wide jet air flow

Wider vanes help give your room a more even distribution of airflow. No more hot and cold patches.



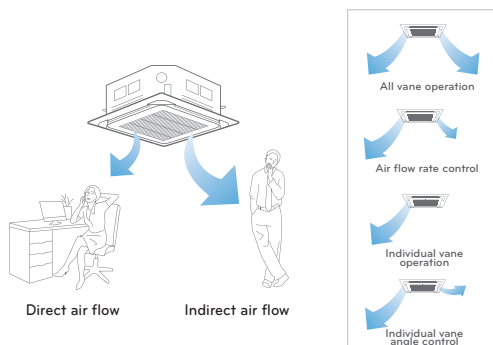
A motor for each vane

Each of the four vanes on the cassette has its own motor. It gives you complete control in air circulation and means that you do not waste energy powering the whole unit when you are only using one vane.



Independent vane operation

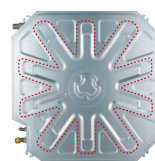
The different vanes on our cassette units can be controlled independently. So whether you want to target airflow to a specific place in your room or would prefer a more balanced air circulation, the cassette has a setting to suit.



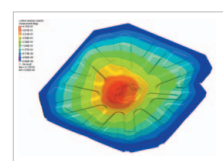
Sshh...Our cassette units are extremely quiet

We have fine-tuned our cassette units to make them as quiet as possible.

- BLDC compressor and aerodynamic fan reduce noise
- Air outlet redesign makes for more streamlined airflow
- Anti-vibration design removes resonance from the unit.



Strong indoor unit base pan



DECA web structure design

Ceiling Cassette

Heat pump H Inverter
(3 Phase)

UT36H

UT42H

UT48H



UU37WH / UU43WH / UU49WH

Specifications

Model	Indoor Unit Fascia Panel		UT36H NM1 PT-UMC	UT42H NM1 PT-UMC	UT48H NM1 PT-UMC
Cooling Capacity ¹	Min-Rated-Max	kW	4.50-10.00-13.00	5.00-12.50-14.90	5.50-13.40-16.00
Heating Capacity ¹	Min-Rated-Max	kW	4.20-11.20-13.70	5.40-14.00-16.30	6.20-15.50-17.80
Power Input	Cooling (Rated-Max)	kW	2.60 ~ 4.42	3.70 ~ 5.18	4.18 ~ 5.60
	Heating (Rated-Max)	kW	2.57 ~ 4.60	3.49 ~ 5.13	4.20 ~ 5.40
EER		W/W	3.85	3.38	3.21
COP		W/W	4.36	4.01	3.69
Energy Efficiency Class	Cooling/Heating		A/A	A/A	A/A
Annual energy consumption ²	Cooling	kWh	1300	1850	2090
Power Supply	Ø / V / Hz		1 / 220-240 / 50	1 / 220-240 / 50	1 / 220-240 / 50
Air Flow Rate	Indoor, H/M/L	m3/min	32 / 26.1 / 20.2	32 / 26.7 / 21.5	32 / 27.4 / 22.8
Sound Level	Indoor, H/M/L	dB(A)±3	47 / 45 / 42	47 / 45 / 42	47 / 45 / 42
Operation Range	Cooling (Indoor)	°C	18-30	18-30	18-30
	Cooling (Outdoor)	°C	-10-48	-10-48	-10-48
	Heating (Indoor)	°C	16-30	16-30	16-30
	Heating (Outdoor)	°C	-18-18	-18-18	-18-18
Running Current	Cooling/Heating	A	0.72 / 0.72	0.72 / 0.72	0.72 / 0.72
Power Supply to...			Outdoor	Outdoor	Outdoor
Moisture Removal Rate		l/h	2.7	3.6	3.6
Drain Hose (O.D / I.D.)		mm	32 / 25	32 / 25	32 / 25
Dimensions	Indoor (WxHxD)	mm	840x288x840	840x288x840	840x288x840
	Fascia (WxHxD)	mm	950x25x950	950x25x950	950x25x950
Net Weight	Indoor	kg	28	28	28
	Fascia	kg	5	5	5
Accessory Options	IR Remote		PQWRHDF0	PQWRHDF0	PQWRHDF0
	Plasma Filter		PTPKMO	PTPKMO	PTPKMO
	Auto Elevation Grille		PTEGMO	PTEGMO	PTEGMO
	Dry Contact		PQDSB	PQDSB	PQDSB

Model	Outdoor Unit		UU37WH U31	UU43WH U31	UU49WH U31
Power Supply	Ø / V / Hz		3 / 380-415 / 50	3 / 380-415 / 50	3 / 380-415 / 50
Running Current	Cooling/Heating	A	4.2 / 4.1	6.0 / 5.7	6.7 / 6.5
Starting Current	Cooling/Heating	A	< 4.2 / 4.1	< 6.0 / 5.7	< 6.7 / 6.5
Suggested Circuit Breaker	Type C	A	10	16	16
Power Supply to...			Outdoor	Outdoor	Outdoor
Interconnecting Cable			3-Core + Earth	3-Core + Earth	3-Core + Earth
Compressor	Type		Twin Rotary	Twin Rotary	Twin Rotary
Air Flow Rate	Outdoor, Max	m3/min	55 x2	55 x2	55 x2
Sound Level	Cooling/Heating	dB(A)±3	51 / 53	51 / 53	51 / 53
	Night Operation	dB(A)±3	47	47	47
Dimensions	Outdoor (WxHxD)	mm	950x1380x330	950x1380x330	950x1380x330
Net Weight	Outdoor	kg	103	103	103
Refrigerant & Charge	R410A	g	3600	3600	3600
Additional Refrigerant charge		g/m	40 (>7.5m)	40 (>7.5m)	40 (>7.5m)
Piping Connections	Liquid Side	mm (in)	9.52 (3/8)	9.52 (3/8)	9.52 (3/8)
	Gas Side	mm (in)	15.88 (5/8)	15.88 (5/8)	15.88 (5/8)
Piping Length (Min/Max)		m	5 / 75	5 / 75	5 / 75
Max. Elevation Difference		m	30	30	30
Accessory Options	PI485 Interface		PMNFP14A0	PMNFP14A0	PMNFP14A0

Note: 1. Capacities are based on the following conditions:
Cooling: - Indoor Temperature 27°C DB / 19°C WB
- Outdoor Temperature 35°C DB / 24°C WB
Heating: - Indoor Temperature 20°C DB / 15°C WB
- Outdoor Temperature 7°C DB / 6°C WB

Note: 2. Annual energy consumption: based on average use of 500 running hours per year at nominal condition

Ceiling Cassette

Compact size [600x600]

UT12

UT18



UU12W

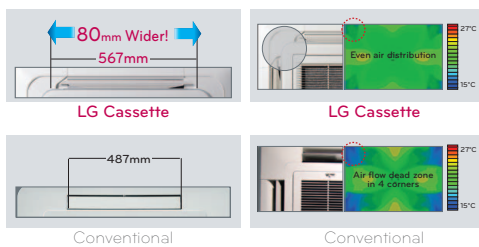


UU18W

Features and Benefits

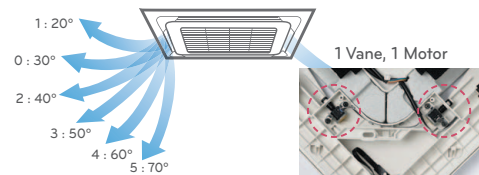
Wide jet air flow

Wider vanes help give your room a more even distribution of airflow. No more hot and cold patches.



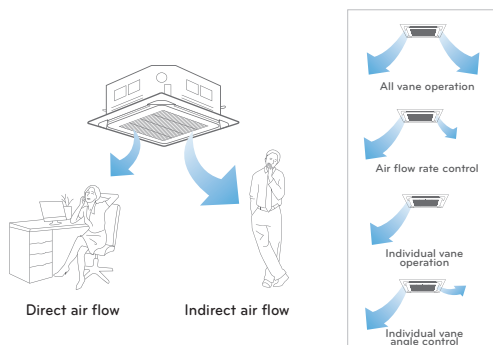
A motor for each vane

Each of the four vanes on the cassette has its own motor. It gives you complete control in air circulation and means that you do not waste energy powering the whole unit when you are only using one vane.



Independent vane operation

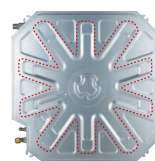
The different vanes on our cassette units can be controlled independently. So whether you want to target airflow to a specific place in your room or would prefer a more balanced air circulation, the cassette has a setting to suit.



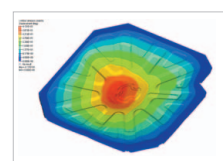
Sshh...Our cassette units are extremely quiet

We have fine-tuned our cassette units to make them as quiet as possible.

- BLDC compressor and aerodynamic fan reduce noise
- Air outlet redesign makes for more streamlined airflow
- Anti-vibration design removes resonance from the unit.



Strong indoor unit base pan



DECA web structure design

Ceiling Cassette

Compact size [600x600]

Specifications

UT12 - UT18



Model	Indoor Unit Fascia Panel		UT12 NRD PT-UQC	UT18 NQD PT-UQC
Power Supply		Ø/V/Hz	1 / 220-240 / 50	1 / 220-240 / 50
Nominal Running Current		A	0.3	0.3
Fan	Motor Type		BLDC	BLDC
	Air Flow Rate (H/M/L)		9.5 / 8.0 / 7.0	13.0 / 12.0 / 11.0
Dimensions (WxHxD)	Body	mm	570*214*570	570*256*570
	Fascia Panel	mm	700*22*700	700*22*700
Net Weight	Body	kg	14	15
	Fascia Panel	kg	3	3
Sound Level (H/M/L)	dB(A)+3		38 / 35 / 32	41 / 39 / 36
Piping Connections	Liquid	mm (inch)	6.35 (1/4)	6.35 (1/4)
	Gas	mm (inch)	9.52 (3/8)	12.7 (1/2)
	Drain (OD/ID)	mm	32 / 25	32 / 25
Refrigerant Type			R410A	R410A
Connectable Outdoor Unit			UU12.ULD / UU12W.ULD	UU18.UED / UU18W.UED
Main Power Supply @			Outdoor	Outdoor
Interconnecting Cable			3-Core + Earth	3-Core + Earth

Outdoor Units - Inverter	Model		UU12W.ULD [AUUW126D]	UU18W.UED [AUUW186D]
Cooling Capacity		kW	1.36 ~ 3.4 ~ 3.74	2.0 ~ 5.0 ~ 5.50
Heating Capacity		kW	1.60 ~ 4.0 ~ 4.40	2.2 ~ 5.5 ~ 6.05
Nom. Input power	Cooling	kW	1.06	1.56
	Heating	kW	1.10	1.52
Running Current	Cooling / Heating	A	5.0 / 5.1	7.1 / 7.2
Starting Current	Cooling / Heating	A	< 5.0	< 7.0
EER		w/w	3.21	3.21
COP		w/w	3.64	3.62
Power Supply	Ø, v, Hz		1, 220-240, 50	1, 220-240, 50
Dimensions	W*H*D	mm	770*540*245	870*655*320
Net Weight	Outdoor	kg (lbs)	32 (70.4)	46 (101.2)
Compressor (Inverter)	Type		Rotary	e-Scroll
	Quantity		1	1
	Motor Type		BLDC	BLDC
Refrigerant	Charge (at 7.5m)	g (oz)	1000 (35.27)	1300 (45.86)
	Type		R410A	R410A
	Control		EEV	EEV
Air Circulation	M³/Min		32	50
Noise Level (H/L)	Sound Press, 1m	dB(A)+3	48 / 42	51 / 45
Piping connections	Liquid	mm (inch)	6.35 (1/4)	6.35 (1/4)
	Gas	mm (inch)	9.52 (3/8)	12.7 (1/2)
Max. Piping Length / Elevation		m	15 / 10	40 / 30
Additional Refrigerant Charge (>7.5m)		g/m	20	20
Recommended Fuse		A	10	16

Note: 1. Capacities are based on the following conditions:
Cooling: - Indoor Temperature 27°C DB /19°C WB
- Outdoor Temperature 35°C DB /24°C WB

Heating: - Indoor Temperature 20°C DB / 15°C WB
- Outdoor Temperature 7°C DB / 6°C WB

Note: 2. Annual energy consumption: based on average use of 500 running hours per year at nominal condition

Ceiling Cassette

Mid-range capacity

UT24

UT30

UT36



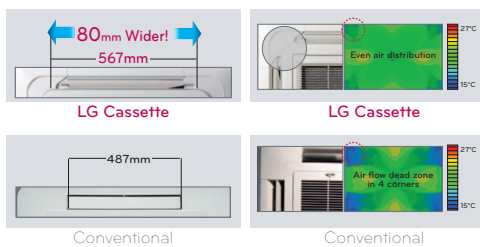
UU24W/UU30W

UU36W

Features and Benefits

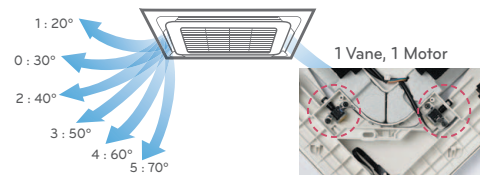
Wide jet air flow

Wider vanes help give your room a more even distribution of airflow. No more hot and cold patches.



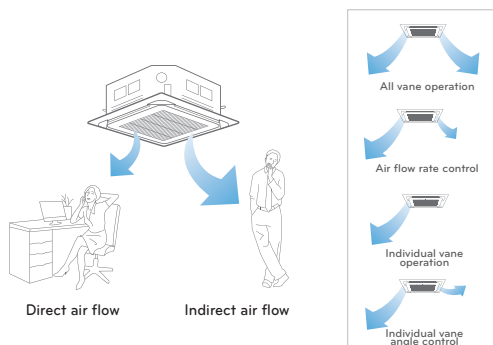
A motor for each vane

Each of the four vanes on the cassette has its own motor. It gives you complete control in air circulation and means that you do not waste energy powering the whole unit when you are only using one vane.



Independent vane operation

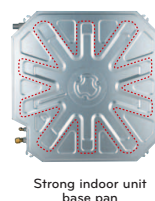
The different vanes on our cassette units can be controlled independently. So whether you want to target airflow to a specific place in your room or would prefer a more balanced air circulation, the cassette has a setting to suit.



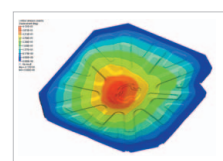
Sshh...Our cassette units are extremely quiet

We have fine-tuned our cassette units to make them as quiet as possible.

- BLDC compressor and aerodynamic fan reduce noise
- Air outlet redesign makes for more streamlined airflow
- Anti-vibration design removes resonance from the unit.



Strong indoor unit base pan



DECA web structure design

Ceiling Cassette

Mid-range capacity

Specifications

UT24 - UT30 - UT36



Model	Indoor Unit Fascia Panel		UT24NPD PT-UMC	UT30NPD PT-UMC	UT36NND PT-UMC
Power Supply		Ø/V/Hz	1 / 220-240 / 50	1 / 220-240 / 50	1 / 220-240 / 50
Nominal Running Current		A	0.6	0.6	0.6
Fan	Motor Type		BLDC	BLDC	BLDC
	Air Flow Rate (H/M/L)		17.0 / 15.0 / 13.0	19.0 / 17.0 / 15.0	24.0 / 22.0 / 19.0
Dimensions (WxHxD)	Body	mm	840*204*840	840*204*840	840*246*840
	Fascia Panel	mm	950*25*950	950*25*950	950*25*950
Net Weight	Body	kg	21	21	23.5
	Fascia Panel	kg	5	5	5
Sound Level (H/M/L)		dB(A)+3	39 / 37 / 34	43 / 40 / 37	43 / 40 / 37
Piping Connections	Liquid	mm (inch)	9.52 (3/8)	9.52 (3/8)	9.52 (3/8)
	Gas	mm (inch)	15.88 (5/8)	15.88 (5/8)	15.88 (5/8)
	Drain (OD/ID)	mm	32 / 25	32 / 25	32 / 25
Refrigerant Type			R410A	R410A	R410A
Connectable Outdoor Unit			UU24.UED / UU24W.UED	UU30.UED / UU30W.UED	UU37.UED / UU36W.UED
Main Power Supply @			Outdoor	Outdoor	Outdoor
Interconnecting Cable			3-Core + Earth	3-Core + Earth	3-Core + Earth

Outdoor Units - Inverter	Model		UU24W.UED [AUUW246D]	UU30W.UED [AUUW306D]	UU36W.UED [AUUW366D]
Cooling Capacity		kW	2.84 ~ 7.1 ~ 7.81	3.20 ~ 8.0 ~ 8.80	4.00 ~ 10.0 ~ 11.00
Heating Capacity		kW	3.20 ~ 8.0 ~ 8.80	3.60 ~ 9.0 ~ 9.90	4.40 ~ 11.0 ~ 12.10
Nom. Input power	Cooling	kW	2.15	2.65	3.12
	Heating	kW	2.34	2.8	3.23
Running Current	Cooling / Heating	A	10.0 / 10.7	12.0 / 13.0	14.0 / 14.2
Starting Current	Cooling / Heating	A	< 10.0	< 12.0	< 14.0
EER		w/w	3.30	3.02	3.21
COP		w/w	3.42	3.21	3.41
Power Supply	Ø, v, Hz		1, 220-240, 50	1, 220-240, 50	1, 220-240, 50
Dimensions	W*H*D	mm	870*808*320	870 *808*320	870 *1060*320
Net Weight	Outdoor	kg (lbs)	60 (132.0)	60 (132.0)	75 (165.0)
Compressor (Inverter)	Type		Rotary	Rotary	Rotary
	Quantity		1	1	1
	Motor Type		BLDC	BLDC	BLDC
Refrigerant	Charge (at 7.5m)	g (oz)	2000 (70.6)	2000 (70.6)	2500 (88.2)
	Type		R410A	R410A	R410A
	Control		EEV	EEV	EEV
Air Circulation		M³/Min	58	58	32 x2
Noise Level (H/L)	Sound Press, 1m	dB(A)+3	52 / 46	52 / 46	56 / 52
Piping connections	Liquid	mm (inch)	9.52 (3/8)	9.52 (3/8)	9.52 (3/8)
	Gas	mm (inch)	15.88 (5/8)	15.88 (5/8)	15.88 (5/8)
Max. Piping Length / Elevation		m	50 / 30	50 / 30	50 / 30
Additional Refrigerant Charge (>7.5m)		g/m	35	35	50
Recommended Fuse		A	20	25	30

Note: 1. Capacities are based on the following conditions:
Cooling: - Indoor Temperature 27°C DB /19°C WB
- Outdoor Temperature 35°C DB /24°C WB

Heating: - Indoor Temperature 20°C DB / 15°C WB
- Outdoor Temperature 7°C DB / 6°C WB
Note: 2. Annual energy consumption: based on average use of 500 running hours per year at nominal condition

Ceiling Cassette

Large-range capacity

UT42

UT48

UT60



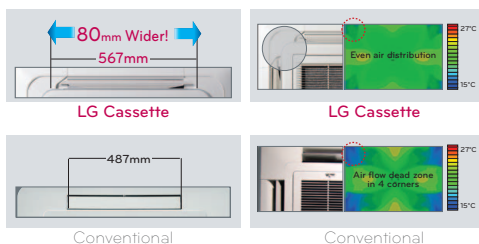
UU42W / UU48W / UU60W



Features and Benefits

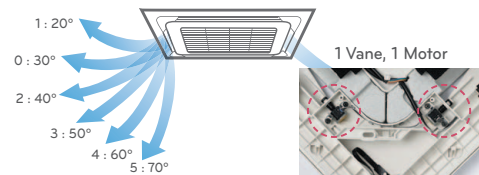
Wide jet air flow

Wider vanes help give your room a more even distribution of airflow. No more hot and cold patches.



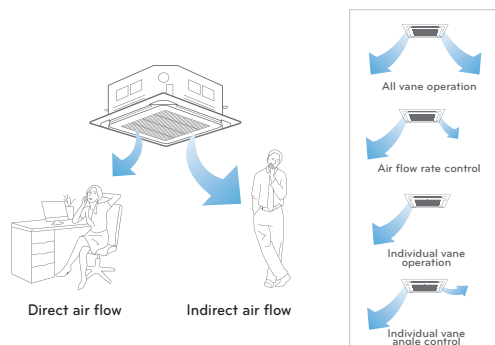
A motor for each vane

Each of the four vanes on the cassette has its own motor. It gives you complete control in air circulation and means that you do not waste energy powering the whole unit when you are only using one vane.



Independent vane operation

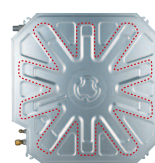
The different vanes on our cassette units can be controlled independently. So whether you want to target airflow to a specific place in your room or would prefer a more balanced air circulation, the cassette has a setting to suit.



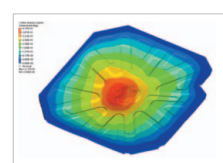
Sshh...Our cassette units are extremely quiet

We have fine-tuned our cassette units to make them as quiet as possible.

- BLDC compressor and aerodynamic fan reduce noise
- Air outlet redesign makes for more streamlined airflow
- Anti-vibration design removes resonance from the unit.



Strong indoor unit base pan



DECA web structure design

Ceiling Cassette

Large-range capacity

Specifications

UT42 - UT48 - UT60



Model	Indoor Unit Fascia Panel		UT42NMD PT-UMC	UT48NMD PT-UMC	UT60NMD PT-UMC
Power Supply		Ø/V/Hz	1 / 220-240 / 50	1 / 220-240 / 50	1 / 220-240 / 50
Nominal Running Current		A	0.72	0.72	0.72
Fan	Motor Type		BLDC	BLDC	BLDC
	Air Flow Rate (H/M/L)		30.0 / 28.0 / 26.0	34.0 / 32.0 / 30.0	34.0 / 32.0 / 30.0
Dimensions (WxHxD)	Body	mm	840*288*840	840*288*840	840*288*840
	Fascia Panel	mm	950*25*950	950*25*950	950*25*950
Net Weight	Body	kg	26	26	26
	Fascia Panel	kg	5	5	5
Sound Level (H/M/L)		dB(A)+3	46 / 44 / 40	49 / 47 / 43	49 / 47 / 43
Piping Connections	Liquid	mm (inch)	9.52 (3/8)	9.52 (3/8)	9.52 (3/8)
	Gas	mm (inch)	15.88 (5/8)	15.88 (5/8)	15.88 (5/8)
	Drain (OD/ID)	mm	32 / 25	32 / 25	32 / 25
Refrigerant Type			R410A	R410A	R410A
Connectable Outdoor Unit			UU42W.U3D	UU48.U3D / UU48W.U3D	UU60.U3D / UU60W.U3D
Main Power Supply @			Outdoor	Outdoor	Outdoor
Interconnecting Cable			3-Core + Earth	3-Core + Earth	3-Core + Earth

Outdoor Units - Inverter	Model		UU42W.U3D [AUUW426D]	UU48W.U3D [AUUW486D]	UU60W.U3D [AUUW606D]
Cooling Capacity		kW	5.0 ~ 12.5 ~ 13.8	5.48 ~ 13.9 ~ 15.7	5.92 ~ 14.6 ~ 16.3
Heating Capacity		kW	5.6 ~ 14.0 ~ 15.4	6.4 ~ 15.5 ~ 17.6	6.8 ~ 16.9 ~ 18.7
Nom. Input power	Cooling	kW	3.89	4.61	5.40
	Heating	kW	3.87	4.54	5.50
Running Current	Cooling / Heating	A	17.7 / 16.7	20.5 / 20.5	24.7 / 23.5
Starting Current	Cooling / Heating	A	< 16.0	< 20.0	< 23.0
EER		w/w	3.21	3.02	2.70
COP		w/w	3.62	3.41	3.07
Power Supply	Ø, v, Hz		1, 220-240, 50	1, 220-240, 50	1, 220-240, 50
Dimensions	W*H*D	mm	950*1380*330	950*1380*330	950*1380*330
Net Weight	Outdoor	kg (lbs)	103 (227)	103 (227)	103 (227)
Compressor (Inverter)	Type		Rotary	Rotary	Rotary
	Quantity		1	1	1
	Motor Type		BLDC	BLDC	BLDC
Refrigerant	Charge (at 7.5m)	g (oz)	3600 (127.0)	3600 (127.0)	3600 (127.0)
	Type		R410A	R410A	R410A
	Control		EEV	EEV	EEV
Air Circulation		M³/Min	55 x2	55 x2	55 x2
Noise Level (H/L)	Sound Press, 1m	dB(A)+3	55 / 51	55 / 51	55 / 51
Piping connections	Liquid	mm (inch)	9.52 (3/8)	9.52 (3/8)	9.52 (3/8)
	Gas	mm (inch)	15.88 (5/8)	15.88 (5/8)	15.88 (5/8)
Max. Piping Length / Elevation		m	75 / 30	75 / 30	75 / 30
Additional Refrigerant Charge (>7.5m)		g/m	40	40	40
Recommended Fuse		A	40	40	50

Note: 1. Capacities are based on the following conditions:
Cooling: - Indoor Temperature 27°C DB /19°C WB
- Outdoor Temperature 35°C DB /24°C WB

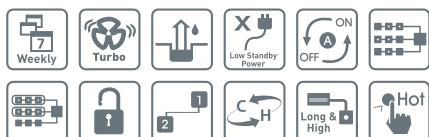
Heating: - Indoor Temperature 20°C DB / 15°C WB
- Outdoor Temperature 7°C DB / 6°C WB

Note: 2. Annual energy consumption: based on average use of 500 running hours per year at nominal condition

Ceiling Concealed Duct

Heat pump H Inverter

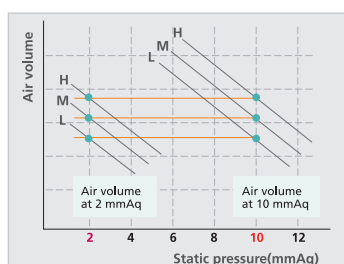
UB18H
UB21H
UB24H



Features and Benefits

ESP Control

The capacity and operational volume of the unit are unaffected by changes in electrostatic pressure (ESP). This results in quieter air conditioning and peak performance regardless of the static pressure.



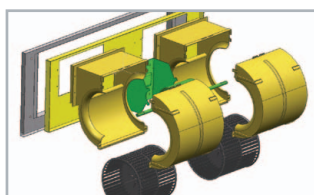
*E.S.P. is easily controlled by remote controller

A fan that's quieter and easier to service

We are always looking for ways to bring our customers quieter air conditioning. A lightweight fan and specially designed fan housing minimises excess sound as the fan spins. The housing also makes for hassle-free servicing. It is easy to dismantle and gives quick access to the fan. During servicing, the fan motor can be removed without disrupting the rest of the fan deck. This reduces disruption to the system.



Conventional

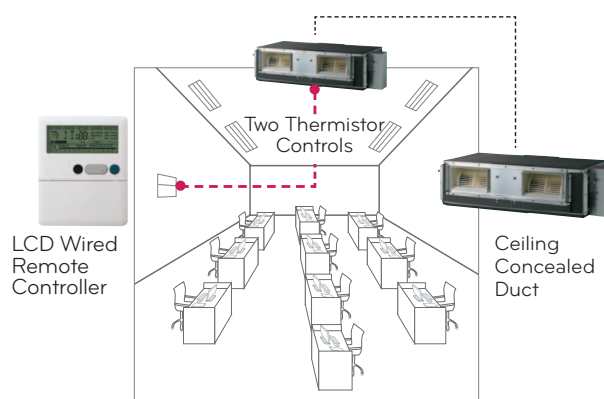


LG Fan and Housing

Precise temperature reading

Traditional air conditioning systems measure room temperature with a thermistor located on or inside the unit. However, sometimes there can be a difference between the temperature measured at the point of airflow release and the actual room temperature.

To alleviate this LG has included a second thermistor in the wall-fixed remote that controls the system. As it's positioned away from the unit it will give a more accurate reading of room temperature. The thermistor used to measure the room temperature can be changed using the remote control.



Ceiling Concealed Duct

Heat pump H Inverter

UB18H
UB21H
UB24H



UU18WH

UU21WH / UU24WH

Specifications

Model	Indoor Unit		UB18H NG1	UB21H NG1	UB24H NG1
Cooling Capacity ¹	Min-Rated-Max	kW	2.50-5.00-6.00	2.40-6.00-6.60	2.84-7.10-7.81
Heating Capacity ¹	Min-Rated-Max	kW	3.00-6.00-7.20	2.80-7.00-7.70	3.20-8.00-8.80
Power Input	Cooling (Rated-Max)	kW	1.35 ~ 2.03	1.73 ~ 2.25	2.09 ~ 2.97
	Heating (Rated-Max)	kW	1.49 ~ 2.29	1.74 ~ 2.01	1.99 ~ 2.23
EER		W/W	3.70	3.47	3.40
COP		W/W	4.03	4.02	4.02
Energy Efficiency Class	Cooling/Heating		A/A	A/A	A/A
Annual energy consumption ²	Cooling	kWh	675	865	1045
Power Supply	Ø / V / Hz		1 / 220-240 / 50	1 / 220-240 / 50	1 / 220-240 / 50
Air Flow Rate	Indoor, H/M/L	m3/min	17 / 15 / 13	25 / 20 / 14	25 / 20 / 14
	Ext.Static Pressuremm H2O		2.5-10	2.5-10	2.5-10
Sound Level	Indoor, H/M/L	dB (A) ±3	30 / 28 / 27	37 / 33 / 29	37 / 33 / 29
Operation Range	Cooling (Indoor)	°C	18-30	18-30	18-30
	Cooling (Outdoor)	°C	-10-48	-10-48	-10-48
	Heating (Indoor)	°C	16-30	16-30	16-30
	Heating (Outdoor)	°C	-18-18	-18-18	-18-18
Running Current	Cooling/Heating	A	0.5 / 0.5	0.9 / 0.9	0.9 / 0.9
Power Supply to...			Outdoor	Outdoor	Outdoor
Moisture Removal Rate		l/h	1.2	0.37	1.36
Drain Hose (O.D. / I.D.)		mm	32 / 26	32 / 26	32 / 26
Dimensions	Indoor (WxHxD)	mm	1180x298x450	1180x298x450	1180x298x450
Duct Spigot	Supply (WxH)	mm	830xN/A	830xN/A	830xN/A
	Return (WxH)	mm	N/A	N/A	N/A
Net Weight	Indoor	kg	34	35	35
Accessory Options	IR Remote		PQWRHDF0	PQWRHDF0	PQWRHDF0
	Remote Room Sensor		PQRSTAO	PQRSTAO	PQRSTAO
	Dry Contact		PQDSB	PQDSB	PQDSB

Model	Outdoor Unit		UU18WH UE1	UU21WH U41	UU24WH U41
Power Supply	Ø / V / Hz		1 / 220-240 / 50	1 / 220-240 / 50	1 / 220-240 / 50
Running Current	Cooling/Heating	A	6.0 / 6.7	7.6 / 7.7	9.5 / 9.0
Starting Current	Cooling/Heating	A	< 6.0 / 6.7	< 7.6 / 7.7	< 9.5 / 9.0
Suggested Circuit Breaker	Type C	A	16	16	20
Power Supply to...			Outdoor	Outdoor	Outdoor
Interconnecting Cable			3-Core + Earth	3-Core + Earth	3-Core + Earth
Compressor	Type		Twin Rotary	Twin Rotary	Twin Rotary
Air Flow Rate	Outdoor, Max	m3/min	58	58	58
Sound Level	Cooling/Heating	dB(A)±3	47 / 50	47 / 50	47 / 50
	Night Operation	dB(A)±3	39	44	44
Dimensions	Outdoor (WxHxD)	mm	870x808x320	950x834x330	950x834x330
Net Weight	Outdoor	kg	58	63	63
Refrigerant & Charge	R410A	g	2000	2200	2200
Additional Refrigerant charge		g/m	20 (>10.0m)	40 (>10.0m)	40 (>10.0m)
Piping Connections	Liquid Side	mm (in)	6.35 (1/4)	9.52 (3/8)	9.52 (3/8)
	Gas Side	mm (in)	12.7 (1/2)	15.88 (5/8)	15.88 (5/8)
Piping Length (Min/Max)		m	5 / 50	5 / 50	5 / 50
Max. Elevation Difference		m	30	30	30
Accessory Options	PI485 Interface		PMNFP14AO	PMNFP14AO	PMNFP14AO

Note: 1. Capacities are based on the following conditions:
Cooling: - Indoor Temperature 27°C DB /19°C WB
- Outdoor Temperature 35°C DB /24°C WB
Heating: - Indoor Temperature 20°C DB / 15°C WB
- Outdoor Temperature 7°C DB / 6°C WB

Note: 2. Annual energy consumption: based on average use of 500 running hours per year at nominal condition

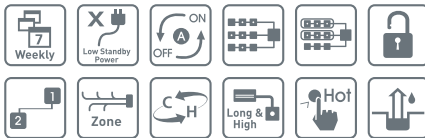
Ceiling Concealed Duct

Heat pump H Inverter

UB36H

UB42H

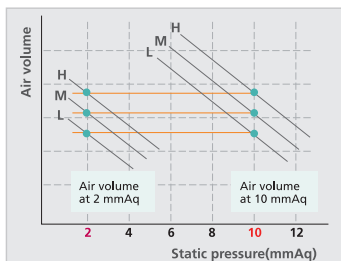
UB48H



Features and Benefits

ESP Control

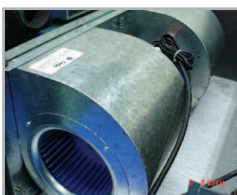
The capacity and operational volume of the unit are unaffected by changes in electrostatic pressure (ESP). This results in quieter air conditioning and peak performance regardless of the static pressure.



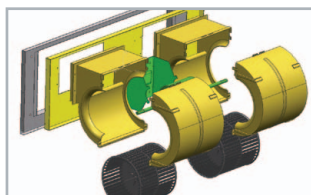
*E.S.P. is easily controlled by remote controller

A fan that's quieter and easier to service

We are always looking for ways to bring our customers quieter air conditioning. A lightweight fan and specially designed fan housing minimises excess sound as the fan spins. The housing also makes for hassle-free servicing. It is easy to dismantle and gives quick access to the fan. During servicing, the fan motor can be removed without disrupting the rest of the fan deck. This reduces disruption to the system.



Conventional

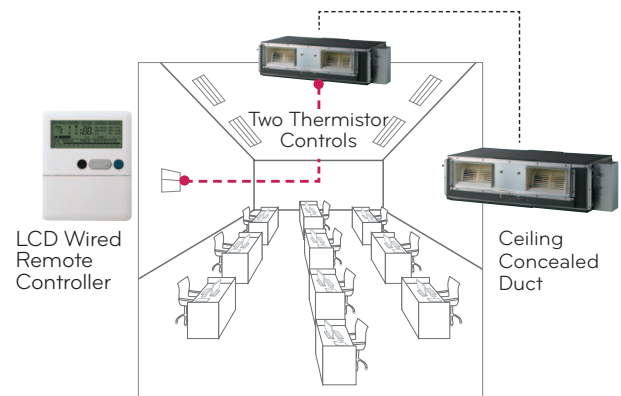


LG Fan and Housing

Precise temperature reading

Traditional air conditioning systems measure room temperature with a thermistor located on or inside the unit. However, sometimes there can be a difference between the temperature measured at the point of airflow release and the actual room temperature.

To alleviate this LG has included a second thermistor in the wall-fixed remote that controls the system. As it's positioned away from the unit it will give a more accurate reading of room temperature. The thermistor used to measure the room temperature can be changed using the remote control.



Ceiling Concealed Duct

Heat pump H Inverter

UB36H

UB42H

UB48H



UU36WH / UU42WH / UU48WH

Specifications

Model	Indoor Unit		UB36H NR1	UB42H NR1	UB48H NR1
Cooling Capacity ¹	Min-Rated-Max	kW	4.80-10.00-14.10	5.00-12.50-15.00	5.60-13.40-16.00
Heating Capacity ¹	Min-Rated-Max	kW	5.20-11.20-14.50	5.60-14.00-17.60	6.60-15.50-18.50
Power Input	Cooling (Rated-Max)	kW	2.69 ~ 4.71	3.67 ~ 5.14	4.15 ~ 5.56
	Heating (Rated-Max)	kW	2.51 ~ 4.20	3.25 ~ 4.70	3.82 ~ 5.00
EER		W/W	3.72	3.41	3.23
COP		W/W	4.46	4.31	4.06
Energy Efficiency Class	Cooling/Heating		A/A	A/A	A/A
Annual energy consumption ²	Cooling	kWh	1345	1835	2075
Power Supply	Ø / V / Hz		1 / 220-240 / 50	1 / 220-240 / 50	1 / 220-240 / 50
Air Flow Rate	Indoor, H/M/L	m3/min	34 / 27 / 20	37 / 31 / 24	40 / 34 / 28
	Ext.Static Pressuremm H2O		4-12	5-12	5-12
Sound Level	Indoor, H/M/L	dB(A)±3	38 / 37 / 36	39 / 38 / 37	39 / 38 / 37
Operation Range	Cooling (Indoor)	°C	18-30	18-30	18-30
	Cooling (Outdoor)	°C	-10-48	-10-48	-10-48
	Heating (Indoor)	°C	16-30	16-30	16-30
	Heating (Outdoor)	°C	-18-18	-18-18	-18-18
Running Current	Cooling/Heating	A	1.20 / 1.20	1.20 / 1.20	1.20 / 1.20
Power Supply to...			Outdoor	Outdoor	Outdoor
Moisture Removal Rate		l/h	4.0	5.0	5.0
Drain Hose (O.D. / I.D.)		mm	32 / 26	32 / 26	32 / 26
Dimensions	Indoor (WxHxD)	mm	1230x380x590	1230x380x590	1230x380x590
Duct Spigot	Supply (WxH)	mm	1004x293	1004x293	1004x293
	Return (WxH)	mm	N/A	N/A	N/A
Net Weight	Indoor	kg	53	53	53
Accessory Options	IR Remote		PQWRHDF0	PQWRHDF0	PQWRHDF0
	Remote Room Sensor		PQRSTA0	PQRSTA0	PQRSTA0
	Dry Contact		PQDSB	PQDSB	PQDSB

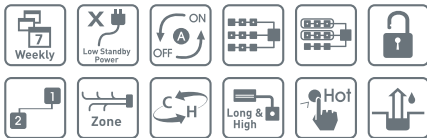
Model	Outdoor Unit		UU36WH U31	UU42WH U31	UU48WH U31
Power Supply	Ø / V / Hz		1 / 220-240 / 50	1 / 220-240 / 50	1 / 220-240 / 50
Running Current	Cooling/Heating	A	11.5 / 11.3	16.8 / 15.0	18.7 / 18.0
Starting Current	Cooling/Heating	A	< 11.5 / 11.3	< 16.8 / 15.0	< 18.7 / 18.0
Suggested Circuit Breaker	Type C	A	25	32	40
Power Supply to...			Outdoor	Outdoor	Outdoor
Interconnecting Cable			3-Core + Earth	3-Core + Earth	3-Core + Earth
Compressor	Type		Twin Rotary	Twin Rotary	Twin Rotary
Air Flow Rate	Outdoor, Max	m3/min	55 x2	55 x2	55 x2
Sound Level	Cooling/Heating	dB(A)±3	51 / 53	51 / 53	51 / 53
	Night Operation	dB(A)±3	47	47	47
Dimensions	Outdoor (WxHxD)	mm	950x1380x330	950x1380x330	950x1380x330
Net Weight	Outdoor	kg	103	103	103
Refrigerant & Charge	R410A	g	3600	3600	3600
Additional Refrigerant charge		g/m	40 (>7.5m)	40 (>7.5m)	40 (>7.5m)
Piping Connections	Liquid Side	mm (in)	9.52 (3/8)	9.52 (3/8)	9.52 (3/8)
	Gas Side	mm (in)	15.88 (5/8)	15.88 (5/8)	15.88 (5/8)
Piping Length (Min/Max)		m	5 / 75	5 / 75	5 / 75
Max. Elevation Difference		m	30	30	30
Accessory Options	PI485 Interface		PMNFP14A0	PMNFP14A0	PMNFP14A0

Note: 1. Capacities are based on the following conditions:
Cooling: - Indoor Temperature 27°C DB /19°C WB
- Outdoor Temperature 35°C DB /24°C WB
Heating: - Indoor Temperature 20°C DB / 15°C WB
- Outdoor Temperature 7°C DB / 6°C WB

Note: 2. Annual energy consumption: based on average use of 500 running hours per year at nominal condition

Ceiling Concealed Duct

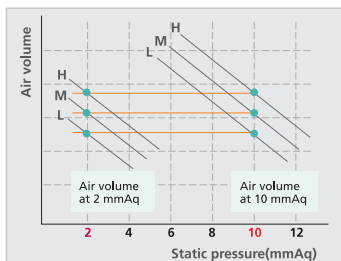
Heat pump H Inverter
(3 Phase)
UB36H
UB42H
UB48H



Features and Benefits

ESP Control

The capacity and operational volume of the unit are unaffected by changes in electrostatic pressure (ESP). This results in quieter air conditioning and peak performance regardless of the static pressure.



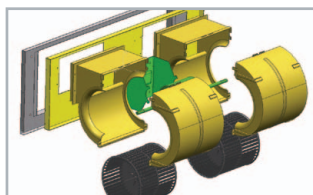
*E.S.P. is easily controlled by remote controller

A fan that's quieter and easier to service

We are always looking for ways to bring our customers quieter air conditioning. A lightweight fan and specially designed fan housing minimises excess sound as the fan spins. The housing also makes for hassle-free servicing. It is easy to dismantle and gives quick access to the fan. During servicing, the fan motor can be removed without disrupting the rest of the fan deck. This reduces disruption to the system.



Conventional

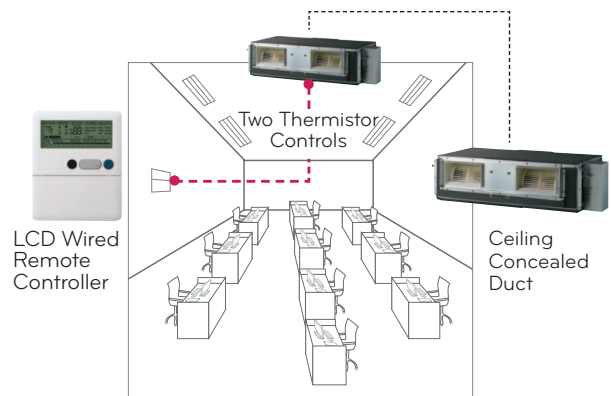


LG Fan and Housing

Precise temperature reading

Traditional air conditioning systems measure room temperature with a thermistor located on or inside the unit. However, sometimes there can be a difference between the temperature measured at the point of airflow release and the actual room temperature.

To alleviate this LG has included a second thermistor in the wall-fixed remote that controls the system. As it's positioned away from the unit it will give a more accurate reading of room temperature. The thermistor used to measure the room temperature can be changed using the remote control.



Ceiling Concealed Duct

Heat pump H Inverter

(3 Phase)

UB36H

UB42H

UB48H



UU37WH / UU43WH / UU49WH

Specifications

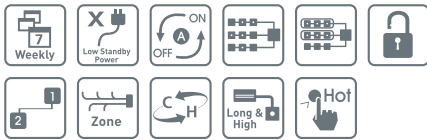
Model	Indoor Unit		UB36H NR1	UB42H NR1	UB48H NR1
Cooling Capacity ¹	Min-Rated-Max	kW	4.80-10.00-14.10	5.00-12.50-15.00	5.60-13.40-16.00
Heating Capacity ¹	Min-Rated-Max	kW	5.20-11.20-14.50	5.60-14.00-17.60	6.60-15.50-18.50
Power Input	Cooling (Rated-Max)	kW	2.69 ~ 4.71	3.67 ~ 5.14	4.15 ~ 5.56
	Heating (Rated-Max)	kW	2.51 ~ 5.00	3.25 ~ 4.70	3.82 ~ 4.20
EER		W/W	3.72	3.41	3.23
COP		W/W	4.46	4.31	4.06
Energy Efficiency Class	Cooling/Heating		A/A	A/A	A/A
Annual energy consumption ²	Cooling	kWh	1345	1835	2075
Power Supply	Ø / V / Hz		1 / 220-240 / 50	1 / 220-240 / 50	1 / 220-240 / 50
Air Flow Rate	Indoor, H/M/L	m3/min	34 / 27 / 20	37 / 31 / 24	40 / 34 / 28
	Ext.Static Pressuremm H2O		4-12	5-12	5-12
Sound Level	Indoor, H/M/L	dB(A)±3	38 / 37 / 36	39 / 38 / 37	39 / 38 / 37
Operation Range	Cooling (Indoor)	°C	18-30	18-30	18-30
	Cooling (Outdoor)	°C	-10~48	-10~48	-10~48
	Heating (Indoor)	°C	16-30	16-30	16-30
	Heating (Outdoor)	°C	-18~18	-18~18	-18~18
Running Current	Cooling/Heating	A	1.20 / 1.20	1.20 / 1.20	1.20 / 1.20
Power Supply to...			Outdoor	Outdoor	Outdoor
Moisture Removal Rate		l/h	4.0	5.0	5.0
Drain Hose (O.D. / I.D.)		mm	32 / 26	32 / 26	32 / 26
Dimensions	Indoor (WxHxD)	mm	1230x380x590	1230x380x590	1230x380x590
Duct Spigot	Supply (WxH)	mm	1004x293	1004x293	1004x293
	Return (WxH)	mm	N/A	N/A	N/A
Net Weight	Indoor	kg	53	53	53
Accessory Options	IR Remote		PQWRHDF0	PQWRHDF0	PQWRHDF0
	Remote Room Sensor		PQRSTA0	PQRSTA0	PQRSTA0
	Dry Contact		PQDSB	PQDSB	PQDSB
Model	Outdoor Unit		UU37WH U31	UU43WH U31	UU49WH U31
Power Supply	Ø / V / Hz		3 / 380-415 / 50	3 / 380-415 / 50	3 / 380-415 / 50
Running Current	Cooling/Heating	A	4.2 / 4.1	6.0 / 5.7	6.7 / 6.5
Starting Current	Cooling/Heating	A	< 4.2 / 4.1	< 6.0 / 5.7	< 6.7 / 6.5
Suggested Circuit Breaker	Type C	A	10	16	16
Power Supply to...			Outdoor	Outdoor	Outdoor
Interconnecting Cable			3-Core + Earth	3-Core + Earth	3-Core + Earth
Compressor	Type		Twin Rotary	Twin Rotary	Twin Rotary
Air Flow Rate	Outdoor, Max	m3/min	55 x2	55 x2	55 x2
Sound Level	Cooling/Heating	dB(A)±3	51 / 53	51 / 53	51 / 53
	Night Operation	dB(A)±3	47	47	47
Dimensions	Outdoor (WxHxD)	mm	950x1380x330	950x1380x330	950x1380x330
Net Weight	Outdoor	kg	103	103	103
Refrigerant & Charge	R410A	g	3600	3600	3600
Additional Refrigerant charge		g/m	40 (>7.5m)	40 (>7.5m)	40 (>7.5m)
Piping Connections	Liquid Side	mm (in)	9.52 (3/8)	9.52 (3/8)	9.52 (3/8)
	Gas Side	mm (in)	15.88 (5/8)	15.88 (5/8)	15.88 (5/8)
Piping Length (Min/Max)		m	5 / 75	5 / 75	5 / 75
Max. Elevation Difference		m	30	30	30
Accessory Options	PI485 Interface		PMNFP14A0	PMNFP14A0	PMNFP14A0

Note: 1. Capacities are based on the following conditions:
Cooling: - Indoor Temperature 27°C DB /19°C WB
- Outdoor Temperature 35°C DB /24°C WB
Heating: - Indoor Temperature 20°C DB / 15°C WB
- Outdoor Temperature 7°C DB / 6°C WB

Note: 2. Annual energy consumption: based on average use of 500 running hours per year at nominal condition

Ceiling Concealed Duct

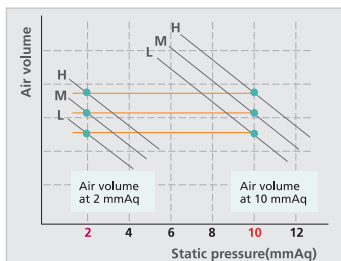
UB18
UB24
UB30
UB36



Features and Benefits

ESP Control

The capacity and operational volume of the unit are unaffected by changes in electrostatic pressure (ESP). This results in quieter air conditioning and peak performance regardless of the static pressure.

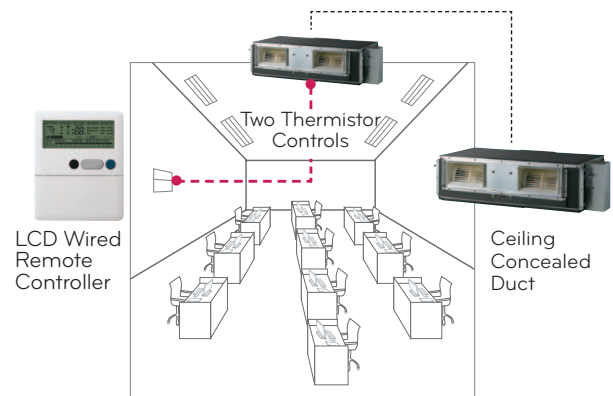


*E.S.P. is easily controlled by remote controller

Precise temperature reading

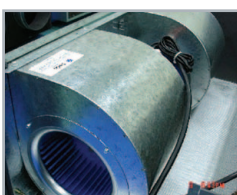
Traditional air conditioning systems measure room temperature with a thermistor located on or inside the unit. However, sometimes there can be a difference between the temperature measured at the point of airflow release and the actual room temperature.

To alleviate this LG has included a second thermistor in the wall-fixed remote that controls the system. As it's positioned away from the unit it will give a more accurate reading of room temperature. The thermistor used to measure the room temperature can be changed using the remote control.

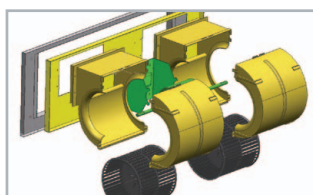


A fan that's quieter and easier to service

We are always looking for ways to bring our customers quieter air conditioning. A lightweight fan and specially designed fan housing minimises excess sound as the fan spins. The housing also makes for hassle-free servicing. It is easy to dismantle and gives quick access to the fan. During servicing, the fan motor can be removed without disrupting the rest of the fan deck. This reduces disruption to the system.



Conventional



LG Fan and Housing

Ceiling Concealed Duct

Specifications

UB18 - UB24 - UB30 - UB36



Model	Indoor Unit - Ceiling Ducted	UB18NHD	UB24NHD	UB30NGD	UT36NGD
Power Supply	Ø/V/Hz	1 / 220-240 / 50	1 / 220-240 / 50	1 / 220-240 / 50	1 / 220-240 / 50
Nominal Running Current	A	0.92	0.92	1.34	1.42
Fan	Motor Type	Induction	Induction	Induction	Induction
	Air Flow Rate M³/Min (H/M/L)	16.5 / 14.5 / 13.0	18.0 / 16.5 / 14.0	26.5 / 23.0 / 20.0	32.0 / 29.0 / 26.0
Dimensions (WxHxD) Body	mm	880*260*450	880*260*450	1180*298*450	1180*298*450
Net Weight	Body kg	35	35	38	38
Sound Level (H/M/L)	dB(A)+3	36 / 34 / 32	38 / 36 / 34	40 / 38 / 35	42 / 39 / 36
Piping Connections	Liquid mm (inch)	6.35 (1/4)	15.88 (5/8)	9.52 (3/8)	9.52 (3/8)
	Gas mm (inch)	12.7 (1/2)	15.88 (5/8)	15.88 (5/8)	15.88 (5/8)
	Drain (OD/ID) mm	32 / 25	32 / 25	32 / 25	32 / 25
Refrigerant Type		R410A	R410A	R410A	R410A
Connectable Outdoor Unit		UU18.UED / UU18W.UED	UU24.UED / UU24W.UED	UU30.UED / UU30W.UED	UU37.UED / UU36W.UED
Main Power Supply @		Outdoor	Outdoor	Outdoor	Outdoor
Interconnecting Cable		3-Core + Earth	3-Core + Earth	3-Core + Earth	3-Core + Earth

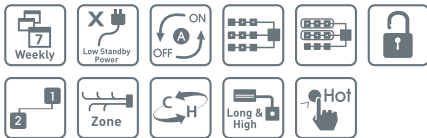
Outdoor Units - Inverter	Model	UU18W.UED [AUUW186D]	UU24W.UED [AUUW246D]	UU30W.UED [AUUW306D]	UU36W.UED [AUUW366D]
Cooling Capacity	kW	1.98 ~ 4.95 ~ 5.44	2.84 ~ 7.1 ~ 7.81	3.20 ~ 8.0 ~ 8.80	4.00 ~ 9.8 ~ 11.00
Heating Capacity	kW	2.40 ~ 6.0 ~ 6.60	3.20 ~ 8.0 ~ 8.80	3.60 ~ 9.0 ~ 9.90	4.48 ~ 11.2 ~ 12.30
Nom. Input power	Cooling kW	1.54	2.62	2.65	3.25
	Heating kW	1.66	2.75	2.49	3.28
Running Current	Cooling / Heating A	7.1 / 7.2	10.0 / 10.7	12.0 / 13.0	14.0 / 14.2
Starting Current	Cooling / Heating A	< 7.0	< 10.0	< 12.0	< 14.0
EER	w/w	3.21	2.71	3.02	3.02
COP	w/w	3.61	2.91	3.61	3.41
Power supply	Ø, v, Hz	1, 220-240, 50	1, 220-240, 50	1, 220-240, 50	1, 220-240, 50
Dimensions	W*H*D mm	870*655*320	870*808*320	870*808*320	870*1060*320
Net Weight	Outdoor kg (lbs)	46 (101.2)	60 (132.0)	60 (132.0)	75 (165.0)
Compressor (Inverter)	Type	e-Scroll	Rotary	Rotary	Rotary
	Quantity	1	1	1	1
	Motor Type	BLDC	BLDC	BLDC	BLDC
Refrigerant	Charge (at 7.5m) g (oz)	1300 (45.86)	2000 (70.6)	2000 (70.6)	2500 (88.2)
	Type	R410A	R410A	R410A	R410A
	Control	EEV	EEV	EEV	EEV
Air Circulation	M³/Min	50	58	58	32 x2
Noise Level (H/L)	Sound Press, 1m dB(A)+3	51 / 45	52 / 46	52 / 46	56 / 52
Piping connections	Liquid mm (inch)	6.35 (1/4)	9.52 (3/8)	9.52 (3/8)	9.52 (3/8)
	Gas mm (inch)	12.7 (1/2)	15.88 (5/8)	15.88 (5/8)	15.88 (5/8)
Max. Piping Length / Elevation	m	40 / 30	50 / 30	50 / 30	50 / 30
Additional Refrigerant Charge (>7.5)	g/m	20	35	35	50
Recommended Fuse	A	16	20	25	30

Note: 1. Capacities are based on the following conditions:
Cooling: - Indoor Temperature 27°C DB /19°C WB
- Outdoor Temperature 35°C DB /24°C WB

Heating: - Indoor Temperature 20°C DB / 15°C WB
- Outdoor Temperature 7°C DB / 6°C WB
Note: 2. Annual energy consumption: based on average use of 500 running hours per year at nominal condition

Ceiling Concealed Duct

UB42
UB48
UB60

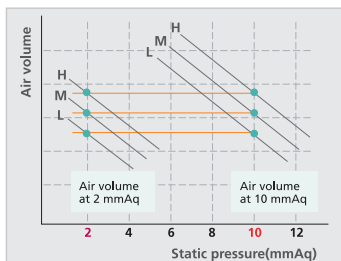


UU42W / UU48W / UU60W

Features and Benefits

ESP Control

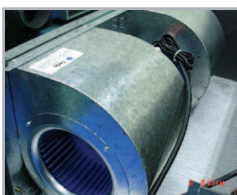
The capacity and operational volume of the unit are unaffected by changes in electrostatic pressure (ESP). This results in quieter air conditioning and peak performance regardless of the static pressure.



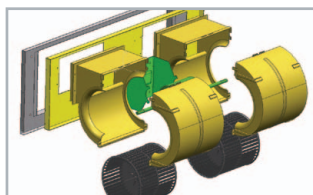
*E.S.P. is easily controlled by remote controller

A fan that's quieter and easier to service

We are always looking for ways to bring our customers quieter air conditioning. A lightweight fan and specially designed fan housing minimises excess sound as the fan spins. The housing also makes for hassle-free servicing. It is easy to dismantle and gives quick access to the fan. During servicing, the fan motor can be removed without disrupting the rest of the fan deck. This reduces disruption to the system.



Conventional

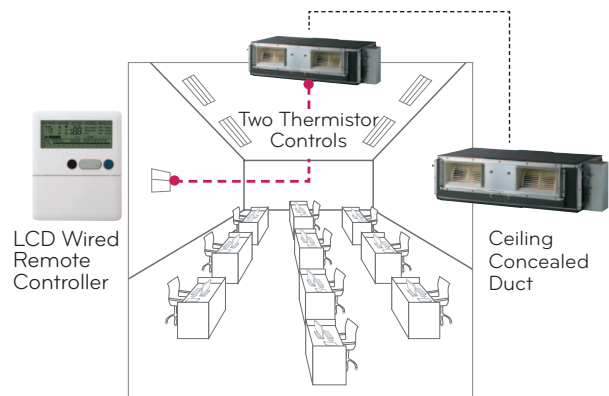


LG Fan and Housing

Precise temperature reading

Traditional air conditioning systems measure room temperature with a thermistor located on or inside the unit. However, sometimes there can be a difference between the temperature measured at the point of airflow release and the actual room temperature.

To alleviate this LG has included a second thermistor in the wall-fixed remote that controls the system. As it's positioned away from the unit it will give a more accurate reading of room temperature. The thermistor used to measure the room temperature can be changed using the remote control.



Ceiling Concealed Duct

Specifications

UB42 - UB48 - UB60



Indoor Unit - Ceiling Ducted			UB42NRD [ABNH426RLAD]	UB48NRD [ABNH486RLAD]	UB60NRD [ABNH606RLAD]
Power Supply	Ø/V/Hz	A	1 / 220-240 / 50	1 / 220-240 / 50	1 / 220-240 / 50
Nominal Running Current			3.65	3.65	3.65
Fan	Motor Type		Induction	Induction	Induction
	Air Flow Rate M³/Min (H/M/L)		36.0 / 32.0 / 38.0	40.0 / 35.0 / 30.0	50.0 / 45.0 / 40.0
Dimensions (WxHxD) Body		mm	1230*380*590	1230*380*590	1230*380*590
Net Weight	Body	kg	60	60	62
Sound Level (H/M/L)	dB(A)+3		42 / 40 / 38	44 / 42 / 40	46 / 44 / 42
Piping Connections	Liquid	mm (inch)	9.52 (3/8)	9.52 (3/8)	9.52 (3/8)
	Gas	mm (inch)	15.88 (5/8)	15.88 (5/8)	15.88 (5/8)
	Drain (OD/ID)	mm	32 / 25	32 / 25	32 / 25
Refrigerant Type			R410A	R410A	R410A
Connectable Outdoor Unit			UU42W.U3D	UU48.U3D / UU48W.U3D	UU60.U3D / UU60W.U3D
Main Power Supply @			Outdoor	Outdoor	Outdoor
Interconnecting Cable			3-Core + Earth	3-Core + Earth	3-Core + Earth

Outdoor Units - Inverter			UU42W-U3D [AUUW426D]	UU48W-U3D [AUUW486D]	UU60W-U3D [AUUW606D]
Cooling Capacity		kW	5.00 ~ 12.5 ~ 13.80	5.60 ~ 14.0 ~ 15.40	5.92 ~ 14.8 ~ 16.30
Heating Capacity		kW	5.60 ~ 14.0 ~ 15.40	6.60 ~ 16.4 ~ 18.20	6.80 ~ 16.8 ~ 18.70
Nom. Input power	Cooling	kW	4.15	4.65	5.26
	Heating	kW	3.73	4.54	4.57
Running Current	Cooling / Heating	A	17.7 / 16.7	20.5 / 20.5	24.7 / 23.5
Starting Current	Cooling / Heating	A	< 16.0	< 20.0	< 23.0
EER		w/w	3.01	3.01	2.81
COP		w/w	3.75	3.61	3.68
Power supply	Ø, v, Hz		1, 220-240, 50	1, 220-240, 50	1, 220-240, 50
Dimensions	W*H*D	mm	950*1380*330	950*1380*330	950*1380*330
Net Weight	Outdoor	kg (lbs)	103 (227)	103 (227)	103 (227)
Compressor (Inverter)	Type		Rotary	Rotary	Rotary
	Quantity		1	1	1
	Motor Type		BLDC	BLDC	BLDC
Refrigerant	Charge (at 7.5m)	g (oz)	3600 (127.0)	3600 (127.0)	3600 (127.0)
	Type		R410A	R410A	R410A
	Control		EEV	EEV	EEV
Air Circulation		M³/Min	55 x2	55 x2	55 x2
Noise Level (H/L)	Sound Press, 1m	dB(A)+3	55 / 51	55 / 51	55 / 51
Piping connections	Liquid	mm (inch)	9.52 (3/8)	9.52 (3/8)	9.52 (3/8)
	Gas	mm (inch)	15.88 (5/8)	15.88 (5/8)	15.88 (5/8)
Max. Piping Length / Elevation		m	75 / 30	75 / 30	75 / 30
Additional Refrigerant Charge (>7.5)		g/m	40	40	40
Recommended Fuse		A	40	40	50

Note: 1. Capacities are based on the following conditions:
Cooling: - Indoor Temperature 27°C DB /19°C WB
- Outdoor Temperature 35°C DB /24°C WB

Heating: - Indoor Temperature 20°C DB / 15°C WB
- Outdoor Temperature 7°C DB / 6°C WB
Note: 2. Annual energy consumption: based on average use of 500 running hours per year at nominal condition

Ceiling Suspended Units

Heat pump H Inverter



UV12H

UV18H



UV12H, UV18H



Features and Benefits

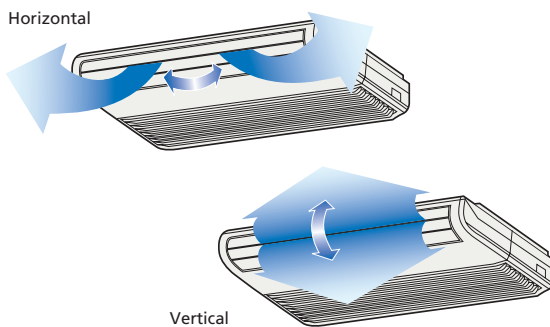
Airflow direction control

Horizontal airflow control

Set the ideal horizontal airflow direction with manually adjustable louvers. Whether you need to direct airflow to a specific area, or would prefer a more balanced coverage of your room – you can alter the airflow direction with ease.

Vertical airflow control

The direction of the vertical airflow can be adjusted easily by remote control. The airflow can be set at the touch of a button.

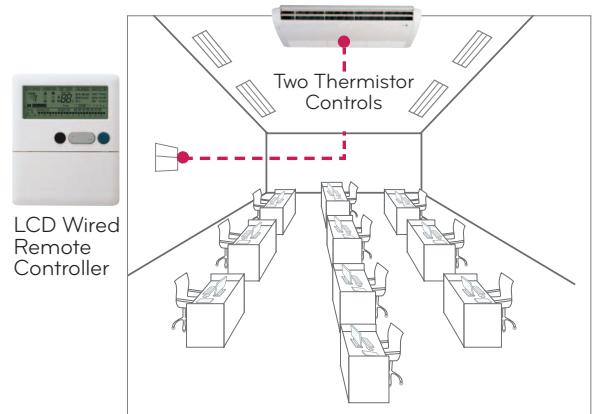


Precise temperature reading

Traditional air conditioning systems measure room temperature with a thermistor located on or inside the unit. However, sometimes there can be a difference between the temperature measured at the point of airflow release and the actual room temperature. To alleviate this, LG has included a second thermistor in the wall-fixed remote that controls the system.

As it's positioned away from the unit it will give a more accurate reading of room temperature. The thermistor used to measure the room temperature can be changed using the remote control.*

*Optional wired remote controller (PQRCVSLO/PQRCVSLOQW)



Ceiling Suspended Units

Heat pump H Inverter

UV12H
UV18H



UU12WH

UU18WH

Specifications

Model	Indoor Unit		UV12H NJ1	UV18H NJ1
Cooling Capacity ¹	Min-Rated-Max	kW	1.40~3.50~4.20	2.00~5.00~5.50
Heating Capacity ¹	Min-Rated-Max	kW	1.60~4.00~4.80	2.20~5.40~6.10
Power Input	Cooling (Rated-Max)	kW	1.03 ~ 1.42	1.31 ~ 1.87
	Heating (Rated-Max)	kW	1.05 ~ 1.78	1.49 ~ 2.20
EER		W/W	3.40	3.82
COP		W/W	3.81	3.62
Energy Efficiency Class	Cooling/Heating		A/A	A/A
Annual energy consumption ²	Cooling	kWh	515	655
Power Supply	Ø / V / Hz		1 / 220-240 / 50	1 / 220-240 / 50
Air Flow Rate	Indoor, H/M/L	m3/min	12.4 / 11.4 / 10.4	13.9 / 12.9 / 11.9
Sound Level	Indoor, H/M/L	dB(A)±3	42 / 40 / 39	45 / 43 / 41
Operation Range	Cooling (Indoor)	°C	18~30	18~30
	Cooling (Outdoor)	°C	-10~48	-10~48
	Heating (Indoor)	°C	16~30	16~30
	Heating (Outdoor)	°C	-18~18	-18~18
Running Current	Cooling/Heating	A	0.6 / 0.6	0.6 / 0.6
Power Supply to...			Outdoor	Outdoor
Moisture Removal Rate		l/h	0.58	1.63
Drain Hose (O.D / I.D.)		mm	20 / 17	20 / 17
Dimensions	Indoor (WxHxD)	mm	950x650x220	950x650x220
Net Weight	Indoor	kg	24.6	24.6
Accessory Options	IR Remote		PVRCUSZO	PVRCUSZO
	Plasma Filter		PQDSB	PQDSB

Model	Outdoor Unit		UU12WH UE1	UU18WH UE1
Power Supply	Ø / V / Hz		1 / 220-240 / 50	1 / 220-240 / 50
Running Current	Cooling/Heating	A	4.4 / 4.6	6.0 / 6.7
Starting Current	Cooling/Heating	A	< 4.4 / 4.6	< 6.0 / 6.7
Suggested Circuit Breaker	Type C	A	10	16
Power Supply to...			Outdoor	Outdoor
Interconnecting Cable			3-Core + Earth	3-Core + Earth
Compressor	Type		Twin Rotary	Twin Rotary
Air Flow Rate	Outdoor, Max	m3/min	50	58
Sound Level	Cooling/Heating	dB(A)±3	48 / 48	47 / 50
	Night Operation	dB(A)±3	45	39
Dimensions	Outdoor (WxHxD)	mm	870x655x320	870x808x320
Net Weight	Outdoor	kg	46	58
Refrigerant & Charge	R410A	g	1250	2000
Additional Refrigerant charge		g/m	20 (>10.0m)	20 (>10.0m)
Piping Connections	Liquid Side	mm (in)	6.35 (1/4)	6.35 (1/4)
	Gas Side	mm (in)	9.52 (3/8)	12.7 (1/2)
Piping Length (Min/Max)		m	5 / 30	5 / 50
Max. Elevation Difference		m	20	20
Accessory Options	PI485 Interface		PMNFP14A0	PMNFP14A0

Note: 1. Capacities are based on the following conditions:
Cooling: - Indoor Temperature 27°C DB /19°C WB
- Outdoor Temperature 35°C DB /24°C WB
Heating: - Indoor Temperature 20°C DB / 15°C WB
- Outdoor Temperature 7°C DB / 6°C WB

Note: 2. Annual energy consumption: based on average use of 500 running hours per year at nominal condition

Ceiling Suspended Units

Heat pump H Inverter



UV21H
UV24H



UV21H , UV24H



Features and Benefits

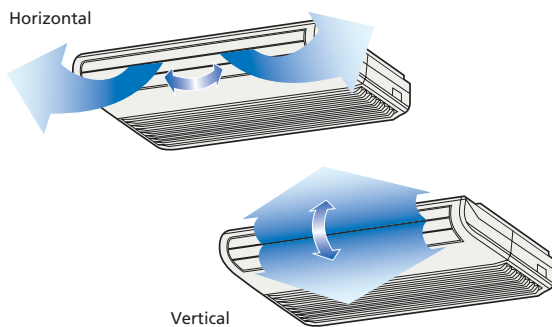
Airflow direction control

Horizontal airflow control

Set the ideal horizontal airflow direction with manually adjustable louvers. Whether you need to direct airflow to a specific area, or would prefer a more balanced coverage of your room – you can alter the airflow direction with ease.

Vertical airflow control

The direction of the vertical airflow can be adjusted easily by remote control. The airflow can be set at the touch of a button.

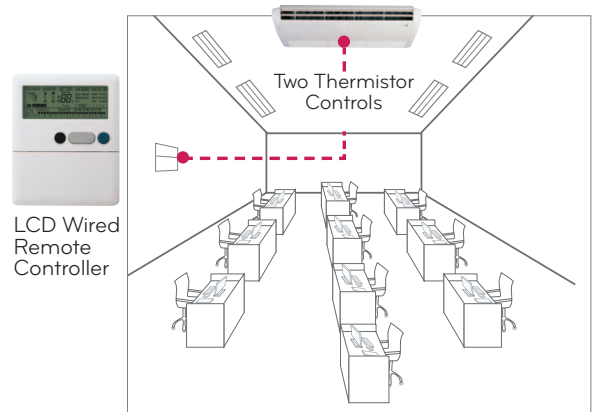


Precise temperature reading

Traditional air conditioning systems measure room temperature with a thermistor located on or inside the unit. However, sometimes there can be a difference between the temperature measured at the point of airflow release and the actual room temperature. To alleviate this, LG has included a second thermistor in the wall-fixed remote that controls the system.

As it's positioned away from the unit it will give a more accurate reading of room temperature. The thermistor used to measure the room temperature can be changed using the remote control.*

*Optional wired remote controller (PQRCVSLO/PQRCVSLOQW)



Ceiling Suspended Units

Heat pump H Inverter

UV21H
UV24H



UU21WH / UU24WH

Specifications

Model	Indoor Unit		UV21H NK1	UV24H NK1
Cooling Capacity ¹	Min-Rated-Max	kW	2.80~6.00~8.00	2.80~7.00~8.40
Heating Capacity ¹	Min-Rated-Max	kW	3.10~7.00~9.00	3.20~7.70~9.20
Power Input	Cooling (Rated-Max)	kW	1.60 ~ 2.64	1.94 ~ 2.81
	Heating (Rated-Max)	kW	1.66 ~ 2.80	1.92 ~ 3.00
EER		W/W	3.75	3.61
COP		W/W	4.22	4.01
Energy Efficiency Class	Cooling/Heating		A/A	A/A
Annual energy consumption 2.	Cooling	kWh	800	970
Power Supply	Ø / V / Hz		1 / 220-240 / 50	1 / 220-240 / 50
Air Flow Rate	Indoor, H/M/L	m3/min	20.4 / 18.8 / 17.2	21.4 / 19.8 / 18.2
Sound Level	Indoor, H/M/L	dB(A)±3	44 / 42 / 41	45 / 44 / 41
Operation Range	Cooling (Indoor)	°C	18~30	18~30
	Cooling (Outdoor)	°C	-10~48	-10~48
	Heating (Indoor)	°C	16~30	16~30
	Heating (Outdoor)	°C	-18~18	-18~18
Running Current	Cooling/Heating	A	0.7	0.7
Power Supply to...			Outdoor	Outdoor
Moisture Removal Rate		l/h	1.86	1.86
Drain Hose (O.D / I.D.)		mm	20 / 17	20 / 17
Dimensions	Indoor (WxHxD)	mm	1350x650x220	1350x650x220
Net Weight	Indoor	kg	35	35
Accessory Options	IR Remote		PVRCUSZO	PVRCUSZO
	Plasma Filter		PQDSB	PQDSB

Model	Outdoor Unit		UU21WH U41	UU24WH U41
Power Supply	Ø / V / Hz		1 / 220-240 / 50	1 / 220-240 / 50
Running Current	Cooling/Heating	A	7.6 / 7.7	9.5 / 9.0
Starting Current	Cooling/Heating	A	< 7.6 / 7.7	< 9.5 / 9.0
Suggested Circuit Breaker	Type C	A	16	20
Power Supply to...			Outdoor	Outdoor
Interconnecting Cable			3-Core + Earth	3-Core + Earth
Compressor	Type		Twin Rotary	Twin Rotary
Air Flow Rate	Outdoor, Max	m3/min	58	58
Sound Level	Cooling/Heating	dB(A)±3	47 / 50	47 / 50
	Night Operation	dB(A)±3	44	44
Dimensions	Outdoor (WxHxD)	mm	950x834x330	950x834x330
Net Weight	Outdoor	kg	63	63
Refrigerant & Charge	R410A	g	2200	2200
Additional Refrigerant charge		g/m	40 (>10.0m)	40 (>10.0m)
Piping Connections	Liquid Side	mm (in)	9.52 (3/8)	9.52 (3/8)
	Gas Side	mm (in)	15.88 (5/8)	15.88 (5/8)
Piping Length (Min/Max)		m	5 / 50	5 / 50
Max. Elevation Difference		m	30	30
Accessory Options	PI485 Interface		PMNFP14A0	PMNFP14A0

Note: 1. Capacities are based on the following conditions:
Cooling: - Indoor Temperature 27°C DB /19°C WB
- Outdoor Temperature 35°C DB /24°C WB
Heating: - Indoor Temperature 20°C DB / 15°C WB
- Outdoor Temperature 7°C DB / 6°C WB

Note: 2. Annual energy consumption: based on average use of 500 running hours per year at nominal condition

Ceiling Suspended Units

Heat pump H Inverter

UV36H

UV42H

UV48H



UV36H, UV42H, UV48H



Features and Benefits

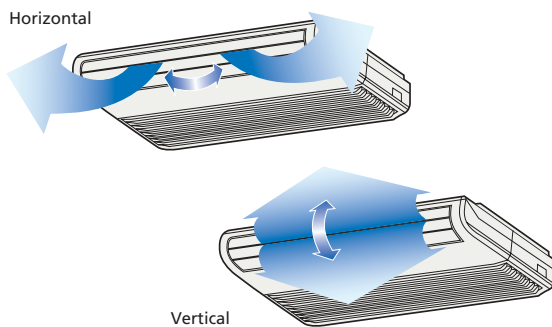
Airflow direction control

Horizontal airflow control

Set the ideal horizontal airflow direction with manually adjustable louvers. Whether you need to direct airflow to a specific area, or would prefer a more balanced coverage of your room – you can alter the airflow direction with ease.

Vertical airflow control

The direction of the vertical airflow can be adjusted easily by remote control. The airflow can be set at the touch of a button.

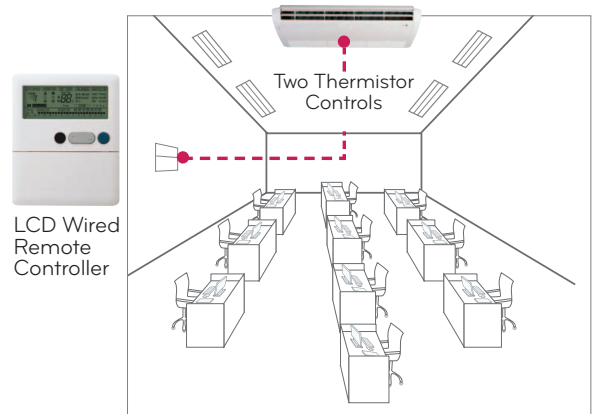


Precise temperature reading

Traditional air conditioning systems measure room temperature with a thermistor located on or inside the unit. However, sometimes there can be a difference between the temperature measured at the point of airflow release and the actual room temperature. To alleviate this, LG has included a second thermistor in the wall-fixed remote that controls the system.

As it's positioned away from the unit it will give a more accurate reading of room temperature. The thermistor used to measure the room temperature can be changed using the remote control.*

*Optional wired remote controller (PQRCVSLO/PQRCVSLOQW)



Ceiling Suspended Units

Heat pump H Inverter

UV36H

UV42H

UV48H



UU36WH / UU42WH / UU48WH

Specifications

Model	Indoor Unit		UV36H NL1	UV42H NL1	UV48H NL1
Cooling Capacity ¹	Min-Rated-Max	kW	4.30-10.00-12.40	5.00-12.50-14.90	5.40-13.30-16.10
Heating Capacity ¹	Min-Rated-Max	kW	4.20-10.50-13.70	5.40-13.60-16.30	6.20-15.00-17.80
Power Input	Cooling (Rated-Max)	kW	2.77 ~ 4.16	3.89 ~ 5.06	4.42 ~ 5.75
	Heating (Rated-Max)	kW	2.62 ~ 4.70	3.57 ~ 5.20	4.16 ~ 5.60
EER		W/W	3.61	3.21	3.01
COP		W/W	4.01	3.81	3.61
Energy Efficiency Class	Cooling/Heating		A/A	A/A	B/A
Annual energy consumption 2.	Cooling	kWh	1385	1945	2210
Power Supply	Ø / V / Hz		1 / 220-240 / 50	1 / 220-240 / 50	1 / 220-240 / 50
Air Flow Rate	Indoor, H/M/L	m3/min	28.6 / 26.9 / 25.2	30.0 / 28.3 / 26.6	31.5 / 29.7 / 28.0
Sound Level	Indoor, H/M/L	dB(A)±3	46 / 44 / 43	47 / 46 / 44	48 / 47 / 45
Operation Range	Cooling (Indoor)	°C	18-30	18-30	18-30
	Cooling (Outdoor)	°C	-10-48	-10-48	-10-48
	Heating (Indoor)	°C	16-30	16-30	16-30
	Heating (Outdoor)	°C	-18-18	-18-18	-18-18
Running Current	Cooling/Heating	A	0.90 / 0.90	0.90 / 0.90	0.90 / 0.90
Power Supply to...			Outdoor	Outdoor	Outdoor
Moisture Removal Rate		l/h	2.93	4.77	5.05
Drain Hose (O.D / I.D.)		mm	20 / 17	20 / 17	20 / 17
Dimensions	Indoor (WxHxD)	mm	1750x650x220	1750x650x220	1750x650x220
Net Weight	Indoor	kg	45	45	45
Accessory Options	IR Remote		PVRCUSZO	PVRCUSZO	PVRCUSZO
	Plasma Filter		PQDSB	PQDSB	PQDSB

Model	Outdoor Unit		UU36WH U31	UU42WH U31	UU48WH U31
Power Supply	Ø / V / Hz		1 / 220-240 / 50	1 / 220-240 / 50	1 / 220-240 / 50
Running Current	Cooling/Heating	A	11.5 / 11.3	16.8 / 15.0	18.7 / 18.0
Starting Current	Cooling/Heating	A	< 11.5 / 11.3	< 16.8 / 15.0	< 18.7 / 18.0
Suggested Circuit Breaker	Type C	A	25	32	40
Power Supply to...			Outdoor	Outdoor	Outdoor
Interconnecting Cable			3-Core + Earth	3-Core + Earth	3-Core + Earth
Compressor	Type		Twin Rotary	Twin Rotary	Twin Rotary
Air Flow Rate	Outdoor, Max	m3/min	55 x2	55 x2	55 x2
Sound Level	Cooling/Heating	dB(A)±3	51 / 53	51 / 53	51 / 53
	Night Operation	dB(A)±3	47	47	47
Dimensions	Outdoor (WxHxD)	mm	950x1380x330	950x1380x330	950x1380x330
Net Weight	Outdoor	kg	103	103	103
Refrigerant & Charge	R410A	g	3600	3600	3600
Additional Refrigerant charge		g/m	40 (>7.5m)	40 (>7.5m)	40 (>7.5m)
Piping Connections	Liquid Side	mm (in)	9.52 (3/8)	9.52 (3/8)	9.52 (3/8)
	Gas Side	mm (in)	15.88 (5/8)	15.88 (5/8)	15.88 (5/8)
Piping Length (Min/Max)		m	5 / 75	5 / 75	5 / 75
Max. Elevation Difference		m	30	30	30
Accessory Options	PI485 Interface		PMNFP14AO	PMNFP14AO	PMNFP14AO

Note: 1. Capacities are based on the following conditions:
Cooling: - Indoor Temperature 27°C DB /19°C WB
- Outdoor Temperature 35°C DB /24°C WB
Heating: - Indoor Temperature 20°C DB / 15°C WB
- Outdoor Temperature 7°C DB / 6°C WB

Note: 2. Annual energy consumption: based on average use of 500 running hours per year at nominal condition

Ceiling Suspended Units

Heat pump H Inverter
(3 Phase)
UV36H
UV42H
UV48H



UV36H, UV42H, UV48H



Features and Benefits

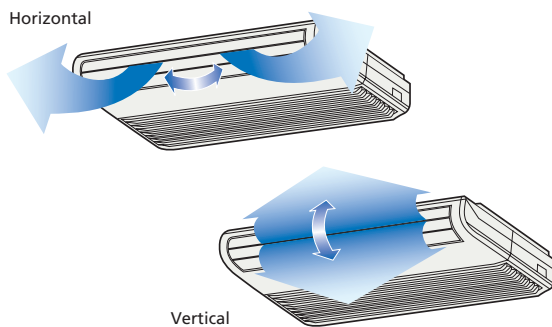
Airflow direction control

Horizontal airflow control

Set the ideal horizontal airflow direction with manually adjustable louvers. Whether you need to direct airflow to a specific area, or would prefer a more balanced coverage of your room – you can alter the airflow direction with ease.

Vertical airflow control

The direction of the vertical airflow can be adjusted easily by remote control. The airflow can be set at the touch of a button.

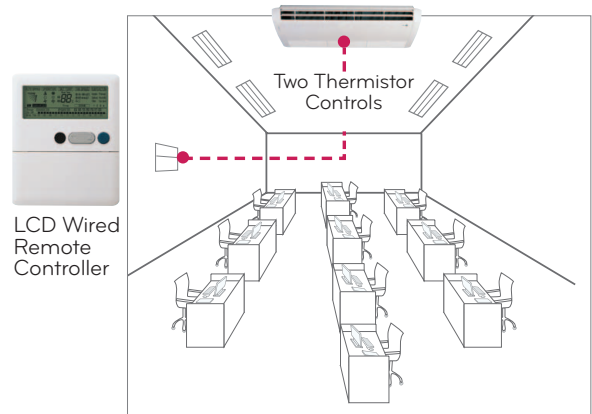


Precise temperature reading

Traditional air conditioning systems measure room temperature with a thermistor located on or inside the unit. However, sometimes there can be a difference between the temperature measured at the point of airflow release and the actual room temperature. To alleviate this, LG has included a second thermistor in the wall-fixed remote that controls the system.

As it's positioned away from the unit it will give a more accurate reading of room temperature. The thermistor used to measure the room temperature can be changed using the remote control.*

*Optional wired remote controller (PQRCVSLO/PQRCVSLOQW)



Ceiling Suspended Units

Heat pump H Inverter
(3 Phase)

UV36H

UV42H

UV48H



UU37WH / UU43WH / UU49WH

Specifications

Model	Indoor Unit		UV36H NL1	UV42H NL1	UV48H NL1
Cooling Capacity ¹	Min-Rated-Max	kW	4.30-10.00-12.40	5.00-12.50-14.90	5.40-13.30-16.10
Heating Capacity ¹	Min-Rated-Max	kW	4.20-10.50-13.70	5.40-13.60-16.30	6.20-15.00-17.80
Power Input	Cooling (Rated-Max)	kW	2.77 ~ 4.16	3.89 ~ 5.06	4.42 ~ 5.75
	Heating (Rated-Max)	kW	2.62 ~ 4.70	3.57 ~ 5.20	4.16 ~ 5.60
EER		W/W	3.61	3.21	3.01
COP		W/W	4.01	3.81	3.61
Energy Efficiency Class	Cooling/Heating		A/A	A/A	B/A
Annual energy consumption 2.	Cooling	kWh	1385	1945	2210
Power Supply	Ø / V / Hz		1 / 220-240 / 50	1 / 220-240 / 50	1 / 220-240 / 50
Air Flow Rate	Indoor, H/M/L	m3/min	28.6 / 26.9 / 25.2	30.0 / 28.3 / 26.6	31.5 / 29.7 / 28.0
Sound Level	Indoor, H/M/L	dB(A)±3	46 / 44 / 43	47 / 46 / 44	48 / 47 / 45
Operation Range	Cooling (Indoor)	°C	18-30	18-30	18-30
	Cooling (Outdoor)	°C	-10-48	-10-48	-10-48
	Heating (Indoor)	°C	16-30	16-30	16-30
	Heating (Outdoor)	°C	-18-18	-18-18	-18-18
Running Current	Cooling/Heating	A	0.90 / 0.90	0.90 / 0.90	0.90 / 0.90
Power Supply to...			Outdoor	Outdoor	Outdoor
Moisture Removal Rate		l/h	2.93	4.77	5.05
Drain Hose (O.D / I.D.)		mm	20 / 17	20 / 17	20 / 17
Dimensions	Indoor (WxHxD)	mm	1750x650x220	1750x650x220	1750x650x220
Net Weight	Indoor	kg	45	45	45
Accessory Options	IR Remote		PVRCUSZO	PVRCUSZO	PVRCUSZO
	Plasma Filter		PQDSB	PQDSB	PQDSB

Model	Outdoor Unit		UU37WH U31	UU43WH U31	UU49WH U31
Power Supply	Ø / V / Hz		3 / 380-415 / 50	3 / 380-415 / 50	3 / 380-415 / 50
Running Current	Cooling/Heating	A	4.2 / 4.1	6.0 / 5.7	6.7 / 6.5
Starting Current	Cooling/Heating	A	< 4.2 / 4.1	< 6.0 / 5.7	< 6.7 / 6.5
Suggested Circuit Breaker	Type C	A	10	16	16
Power Supply to...			Outdoor	Outdoor	Outdoor
Interconnecting Cable			3-Core + Earth	3-Core + Earth	3-Core + Earth
Compressor	Type		Twin Rotary	Twin Rotary	Twin Rotary
Air Flow Rate	Outdoor, Max	m3/min	55 x2	55 x2	55 x2
Sound Level	Cooling/Heating	dB(A)±3	51 / 53	51 / 53	51 / 53
	Night Operation	dB(A)±3	47	47	47
Dimensions	Outdoor (WxHxD)	mm	950x1380x330	950x1380x330	950x1380x330
Net Weight	Outdoor	kg	103	103	103
Refrigerant & Charge	R410A	g	3600	3600	3600
Additional Refrigerant charge		g/m	40 (>7.5m)	40 (>7.5m)	40 (>7.5m)
Piping Connections	Liquid Side	mm (in)	9.52 (3/8)	9.52 (3/8)	9.52 (3/8)
	Gas Side	mm (in)	15.88 (5/8)	15.88 (5/8)	15.88 (5/8)
Piping Length (Min/Max)		m	5 / 75	5 / 75	5 / 75
Max. Elevation Difference		m	30	30	30
Accessory Options	PI485 Interface		PMNFP14AO	PMNFP14AO	PMNFP14AO

Note: 1. Capacities are based on the following conditions:
Cooling: - Indoor Temperature 27°C DB /19°C WB
- Outdoor Temperature 35°C DB /24°C WB
Heating: - Indoor Temperature 20°C DB / 15°C WB
- Outdoor Temperature 7°C DB / 6°C WB

Note: 2. Annual energy consumption: based on average use of 500 running hours per year at nominal condition

Ceiling Suspended Units

UV36
UV42
UV48
UV60



UV36H



UV42, UV48, UV60



UU36W



UU42W/UU48W/
UU60W

Features and Benefits

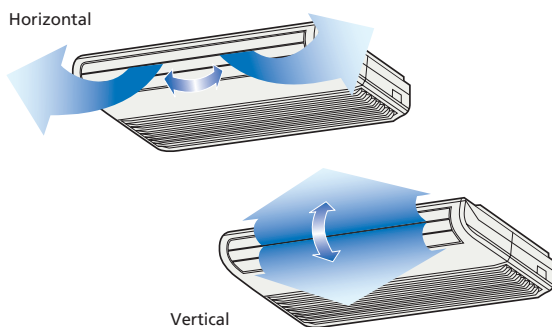
Airflow direction control

Horizontal airflow control

Set the ideal horizontal airflow direction with manually adjustable louvers. Whether you need to direct airflow to a specific area, or would prefer a more balanced coverage of your room – you can alter the airflow direction with ease.

Vertical airflow control

The direction of the vertical airflow can be adjusted easily by remote control. The airflow can be set at the touch of a button.

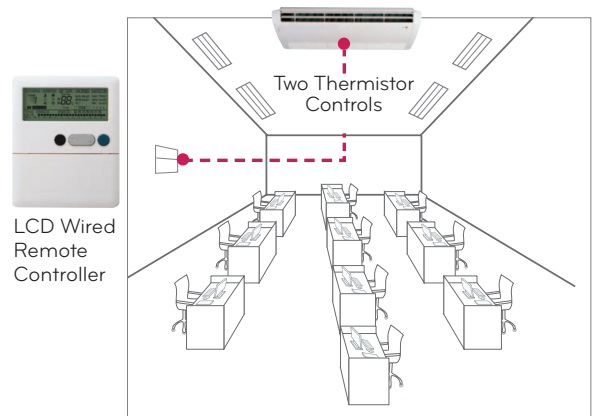


Precise temperature reading

Traditional air conditioning systems measure room temperature with a thermistor located on or inside the unit. However, sometimes there can be a difference between the temperature measured at the point of airflow release and the actual room temperature. To alleviate this, LG has included a second thermistor in the wall-fixed remote that controls the system.

As it's positioned away from the unit it will give a more accurate reading of room temperature. The thermistor used to measure the room temperature can be changed using the remote control.*

*Optional wired remote controller (PVRCUSZ0)



Ceiling Suspended Units

Specifications

UV36 - UV42 - UV48 - UV60



Model	Indoor Unit	UV36NKD [AVNH366KLAD]	UV42NLD [AVNH426LLAD]	UV48NLD [AVN486LLAD]	UV60NLD [AVN606LLAD]
Power Supply	Ø/V/Hz	1 / 220-240 / 50	1 / 220-240 / 50	1 / 220-240 / 50	1 / 220-240 / 50
Nominal Running Current	A	0.97	0.67 x2	0.67 x2	0.67 x2
Fan	Motor Type	Induction	Induction	Induction	Induction
	Air Flow Rate M³/Min (H/M/L)	29.0 / 27.0 / 24.0	32.0 / 30.0 / 28.0	36.0 / 34.0 / 32.0	40.0 / 38.0 / 36.0
Dimensions (WxHxD)	Body mm	1350*650*220	1750*650*220	1750*650*220	1750*650*220
Net Weight	Body kg	35	45	45	45
Sound Level (H/M/L)	dB(A)+3	44 / 42 / 40	48 / 45 / 42	54 / 52 / 50	56 / 54 / 52
Piping Connections	Liquid mm (inch)	9.52 (3/8)	9.52 (3/8)	9.52 (3/8)	9.52 (3/8)
	Gas mm (inch)	15.88 (5/8)	15.88 (5/8)	15.88 (5/8)	15.88 (5/8)
	Drain (OD/ID) mm	20 / 17	20 / 17	20 / 17	20 / 17
Refrigerant Type		R410A	R410A	R410A	R410A
Connectable Outdoor Unit		UU37UED/UU36W.UED	UU42W.U3D	UU48.U3D/UU48W.U3D	UU60.U3D/UU60W.U3D
Main Power Supply @		Outdoor	Outdoor	Outdoor	Outdoor
Interconnecting Cable		3-Core + Earth	3-Core + Earth	3-Core + Earth	3-Core + Earth

Outdoor Units - Inverter	Model	UU36W.UED [AUUW366D]	UU42W-U3D [AUUW426D]	UU48W-U3D [AUUW486D]	UU60W-U3D [AUUW606D]
Cooling Capacity	kW	3.80 ~ 9.5 ~ 10.50	5.0 ~ 12.5 ~ 13.8	5.32 ~ 13.3 ~ 14.6	5.72 ~ 14.4 ~ 15.7
Heating Capacity	kW	4.20 ~ 10.5 ~ 11.60	5.6 ~ 13.6 ~ 15.4	6.4 ~ 15.3 ~ 17.6	6.8 ~ 16.8 ~ 18.7
Nom. Input power	Cooling kW	3.23	4.00	4.00	5.30
	Heating kW	3.27	3.98	3.98	5.50
Running Current	Cooling / Heating A	14.0 / 14.2	17.7 / 16.7	20.5 / 20.5	24.7 / 23.5
Starting Current	Cooling / Heating A	< 14.0	< 16.0	< 20.0	< 23.0
EER	w/w	2.94	3.13	3.33	2.72
COP	w/w	3.21	3.42	3.84	3.05
Power Supply	Ø, v, Hz	1, 220-240, 50	1, 220-240, 50	1, 220-240, 50	1, 220-240, 50
Dimensions	W*H*D mm	870*1060*320	950*1380*330	950*1380*330	950*1380*330
Net Weight	Outdoor kg (lbs)	75 (165.0)	103 (227)	103 (227)	103 (227)
Compressor (Inverter)	Type	Rotary	Rotary	Rotary	Rotary
	Quantity	1	1	1	1
	Motor Type	BLDC	BLDC	BLDC	BLDC
Refrigerant	Charge (at 7.5m) g (oz)	2500 (88.2)	3600 (127.0)	3600 (127.0)	3600 (127.0)
	Type	R410A	R410A	R410A	R410A
	Control	EEV	EEV	EEV	EEV
Air Circulation	M³/Min	32 x2	55 x2	55 x2	55 x2
Noise Level (H/L)	Sound Press, 1m dB(A)+3	56 / 52	55 / 51	55 / 51	55 / 51
Piping connections	Liquid mm (inch)	9.52 (3/8)	9.52 (3/8)	9.52 (3/8)	9.52 (3/8)
	Gas mm (inch)	15.88 (5/8)	15.88 (5/8)	15.88 (5/8)	15.88 (5/8)
Max. Piping Length / Elevation	m	50 / 30	75 / 30	75 / 30	75 / 30
Additional Refrigerant Charge (>7.5m)	g/m	50	40	40	40
Recommended Fuse	A	30	40	40	50

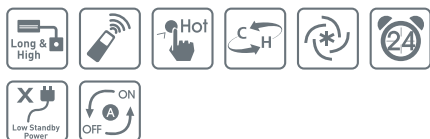
Note: 1. Capacities are based on the following conditions:
Cooling: - Indoor Temperature 27°C DB /19°C WB
- Outdoor Temperature 35°C DB /24°C WB
Heating: - Indoor Temperature 20°C DB / 15°C WB
- Outdoor Temperature 7°C DB / 6°C WB

Note: 2. Annual energy consumption: based on average use of 500 running hours per year at nominal condition

Floor/Ceiling Convertible

Heat pump DC Inverter

UV12



UU09W / UU12W

Features and Benefits

Where do you want your unit?

These flexible systems offer complete control over the position of your indoor unit. They can be installed either on the ceiling or wall-mounted on the floor.



Improved functionality

Clever features have been added to our units to improve performance, such as:

- One touch filter and filter cleaning
- Alarm function
- Power mode

UV12



Airflow direction control

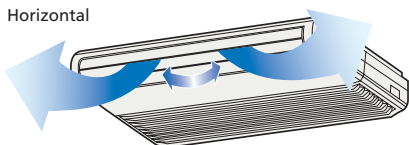
Horizontal airflow control

Set the ideal horizontal airflow direction with manually adjustable louvers. Whether you want to direct airflow to a specific area, or would prefer a more balanced coverage of your room – you can alter the airflow direction with ease.

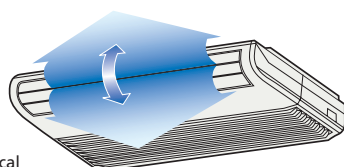
Vertical airflow control

The direction of the vertical airflow can be adjusted easily by remote control. So you can set the airflow that's right for you with the touch of a button.

Horizontal



Vertical



Model	Indoor Unit / Floor/Ceiling		UV12NED [AVNH12GELAD]
Power Supply	Ø/V/Hz		1 / 220-240 / 50
Nominal Running Current	A		0.13
Fan	Motor Type		BLDC
	Air Flow Rate M³/Min (H/M/L)		9.2 / 7.6 / 6.2
Dimensions (WxHxD) Body	mm		900*200*490
Net Weight	Body	kg	13.7
Sound Level (H/M/L)	dB(A)+3		40 / 36 / 31
Piping Connections	Liquid	mm (inch)	6.35 (1/4)
	Gas	mm (inch)	9.52 (3/8)
	Drain (OD/ID)	mm	20 / 16
Refrigerant Type			R410A
Connectable Outdoor Unit			UU12.ULD / UU12W.ULD
Main Power Supply @			Outdoor
Interconnecting Cable			3-Core + Earth

Outdoor Units - Inverter	Model	UU12W.ULD [AUUW126D]	
Cooling Capacity	kW	1.32 ~ 3.3 ~ 3.63	
Heating Capacity	kW	1.52 ~ 3.8 ~ 4.18	
Nom. Input power	Cooling	kW	1.09
	Heating	kW	1.18
Running Current	Cooling / Heating	A	5.0 / 5.1
Starting Current	Cooling / Heating	A	< 5.0
EER	w/w		3.03
COP	w/w		3.22
Power supply	Ø , v, Hz		1, 220-240, 50
Dimensions	W*H*D	mm	770*540*245
Net Weight	Outdoor	kg (lbs)	32 (70.4)
Compressor (Inverter)	Type		Rotary
	Quantity		1
	Motor Type		BLDC
Refrigerant	Charge (at 7.5m)	g (oz)	1000 (35.27)
	Type		R410A
	Control		EEV
Air Circulation	M³/Min		32
Noise Level (H/L)	Sound Press, 1m	dB(A)+3	48 / 42
Piping connections	Liquid	mm (inch)	6.35 (1/4)
	Gas	mm (inch)	9.52 (3/8)
Max. Piping Length / Elevation	m		15 /10
Additional Refrigerant Charge (>7.5)	g/m		20
Recommended Fuse	A		10

Note: 1. Capacities are based on the following conditions:
Cooling: - Indoor Temperature 27°C DB /19°C WB
- Outdoor Temperature 35°C DB /24°C WB
Heating: - Indoor Temperature 20°C DB / 15°C WB
- Outdoor Temperature 7°C DB / 6°C WB

Note: 2. Annual energy consumption: based on average use of 500 running hours per year at nominal condition

Note: 1. Capacities are based on the following conditions:
Cooling: - Indoor Temperature 27°C DB /19°C WB
- Outdoor Temperature 35°C DB /24°C WB
Heating: - Indoor Temperature 20°C DB / 15°C WB
- Outdoor Temperature 7°C DB / 6°C WB

Note: 2. Annual energy consumption: based on average use of 500 running hours per year at nominal condition

Floor/Ceiling Convertible

Heat pump DC Inverter

UV18

UV24

UV30



UU18W



UU24W/UU30W

Features and Benefits

Where do you want your unit?

These flexible systems offer complete control over the position of your indoor unit. They can be installed either on the ceiling or wall-mounted on the floor.



Precise temperature reading

Traditional air conditioning systems measure room temperature with a thermistor located on or inside the unit. However, sometimes there can be a difference between the temperature measured at the point of airflow release and the actual room temperature. To alleviate this, LG has included a second thermistor in the wall-fixed remote that controls the system.

As it's positioned away from the unit it will give a more accurate reading of room temperature. The thermistor used to measure the room temperature can be changed using the remote control.*

*Optional wired remote controller (PVRCUSZ0)

Airflow direction control

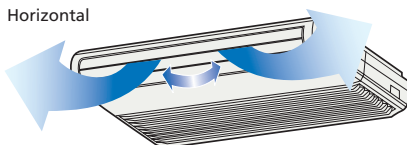
Horizontal airflow control

Set the ideal horizontal airflow direction with manually adjustable louvers. Whether you need to direct airflow to a specific area, or would prefer a more balanced coverage of your room – you can alter the airflow direction with ease.

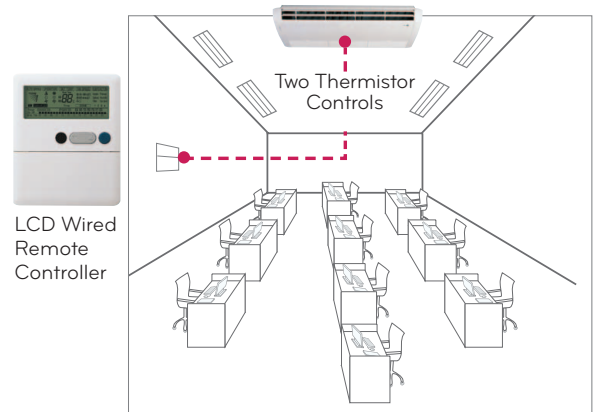
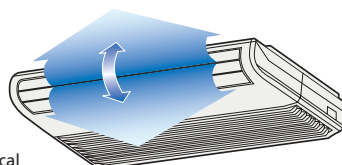
Vertical airflow control

The direction of the vertical airflow can be adjusted easily by remote control. The airflow can be set at the touch of a button.

Horizontal



Vertical



Model	Indoor Unit	UV18 NBD [AVNH186BLAD]	UV24 NBD [AVNH246BLAD]	UV30 NBD [AVNH306BLAD]
Power Supply	Ø/V/Hz	1 / 220-240 / 50	1 / 220-240 / 50	1 / 220-240 / 50
Nominal Running Current	A	0.56	0.56	0.56
Fan	Motor Type	Induction	Induction	Induction
	Air Flow Rate M³/Min (H/M/L)	13.5 / 12.0 / 11.0	15 / 13.5 / 12	18 / 16 / 14
Dimensions (WxHxD)	Body mm	1200*615*205	1200*615*205	1200*615*205
Net Weight	Body kg	30.0	30.0	30.0
Sound Level (H/M/L)	dB(A)+3	43 / 40 / 37	45 / 42 / 39	45 / 42 / 39
Piping Connections	Liquid mm (inch)	6.35 (1/4)	9.52 (3/8)	9.52 (3/8)
	Gas mm (inch)	12.7 (1/2)	15.88 (5/8)	15.88 (5/8)
	Drain (OD/ID) mm	20 / 16	20 / 16	20 / 16
Refrigerant Type		R410A	R410A	R410A
Connectable Outdoor Unit		UU18.UED / UU18W.UED	UU24.UED / UU24W.UED	UU30.UED / UU30W.UED
Main Power Supply @		Outdoor	Outdoor	Outdoor
Interconnecting Cable		3-Core + Earth	3-Core + Earth	3-Core + Earth

Outdoor Units - Inverter	Model	UU18W.UED [AUUW186D]	UU24W.UED [AUUW246D]	UU30W.UED [AUUW306D]
Cooling Capacity	kW	1.92 ~ 4.8 ~ 5.28	2.80 ~ 7.0 ~ 7.70	3.04 ~ 7.6 ~ 8.36
Heating Capacity	kW	2.04 ~ 5.1 ~ 5.61	3.08 ~ 7.7 ~ 8.47	3.36 ~ 8.4 ~ 9.24
Nom. Input power	Cooling kW	1.49	2.30	2.68
	Heating kW	1.49	2.74	2.99
Running Current	Cooling / Heating A	7.1 / 7.2	10.0 / 10.7	12.0 / 13.0
Starting Current	Cooling / Heating A	< 7.0	< 10.0	< 12.0
EER	w/w	3.22	3.04	2.84
COP	w/w	3.42	2.81	2.81
Power Supply	Ø , v, Hz	1, 220-240, 50	1, 220-240, 50	1, 220-240, 50
Dimensions	W*H*D mm	870*655*320	870*808*320	870*808*320
Net Weight	Outdoor kg (lbs)	46 (101.2)	60 (132.0)	60 (132.0)
Compressor (Inverter)	Type	e-Scroll	Rotary	Rotary
	Quantity	1	1	1
	Motor Type	BLDC	BLDC	BLDC
Refrigerant	Charge (at 7.5m) g (oz)	1300 (45.86)	2000 (70.6)	2000 (70.6)
	Type	R410A	R410A	R410A
	Control	EEV	EEV	EEV
Air Circulation	M³/Min	50	58	58
Noise Level (H/L)	Sound Press, 1m dB(A)+3	51 / 45	52 / 46	52 / 46
Piping connections	Liquid mm (inch)	6.35 (1/4)	9.52 (3/8)	9.52 (3/8)
	Gas mm (inch)	12.7 (1/2)	15.88 (5/8)	15.88 (5/8)
Max. Piping Length / Elevation	m	40 / 30	50 / 30	50 / 30
Additional Refrigerant Charge (>7.5m)	g/m	20	35	35
Recommended Fuse	A	16	20	25

Note: 1. Capacities are based on the following conditions:
Cooling: - Indoor Temperature 27°C DB /19°C WB
- Outdoor Temperature 35°C DB /24°C WB
Heating: - Indoor Temperature 20°C DB / 15°C WB
- Outdoor Temperature 7°C DB / 6°C WB

Note: 2. Annual energy consumption: based on average use of 500 running hours per year at nominal condition

Synchro Systems

Single Phase



Features and Benefits

		Possible combination of Indoor units								
		Installation scheme								
		Duo			Trio			Quartet		
IDU : INDOOR UNIT ODU : OUT DOOR INUT BD : BRANCH DISTRIBUTOR UNIT REMO : WIRED REMOTE CONTROLLER										
OUTDOOR UNITS	Capacity (kW)	Cassette	Duct	Ceiling & Floor	Cassette	Duct	Ceiling & Floor	Cassette	Duct	Ceiling & Floor
UU36WH U31	10.0 11.2	UT18H NP1 *2 UT18H NP1 *2	UB18H NG1 *2 UB18H NG1 *2	UV18H NJ1 *2 UV18H NJ1 *2	UT12H NP1 *3 UT12H NP1 *3	- -	- -	- -	- -	- -
UU42WH U31	12.5 14.0	UT21H NN1 *2 UT21H NN1 *2	UB21H NG1 *2 UB21H NG1 *2	UV21H NK1 *2 UV21H NK1 *2	UT18H NP1 *3 UT18H NP1 *3	UB18H NG1 *3 UB18H NG1 *3	UV18H NJ1 *3 UV18H NJ1 *3	UT12H NP1 *4 UT12H NP1 *4	- -	- -
UU48WH U31	13.4 15.5	UT24H NN1 *2 UT24H NN1 *2	UB24H NG1 *2 UB24H NG1 *2	UV24H NK1 *2 UV24H NK1 *2	UT18H NP1 *3 UT18H NP1 *3	UB18H NG1 *3 UB18H NG1 *3	UV18H NI1 *3 UV18H NI1 *3	UT12H NP1 *4 UT12H NP1 *4	- -	- -

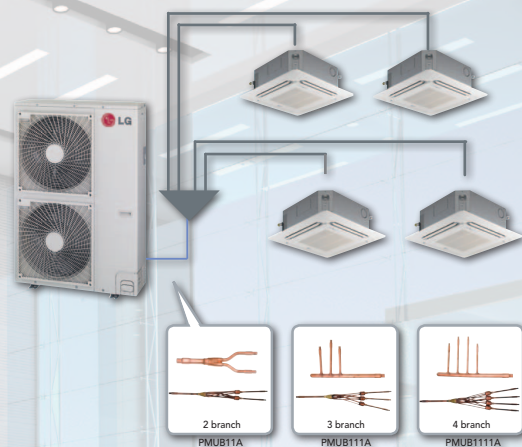
* When installing ceiling and floor type synchro combinations, use the wired remote controller (PVRCUSZ0). For DC inverter, Duct, Convertable (UV18~60) H inverter and others use PQRCVSL0QW.

* In the case of cassettes or duct type synchro combinations, only one wired remote controller can be used in conjunction with the indoor units.

Synchro operation

Offering an economical solution as it uses 2, 3 or 4 indoor units with one outdoor unit. Each indoor unit runs the same cycle in the same mode (cooling or heating) providing the same air distribution all around the room (office or open plan office) even in irregular shaped spaces.

- Simultaneously On/Off (1 Cycle)
- Connect up to 4 indoor units
- Use simple branch piping
- H-Inverter : 10.0/12.5/13.4 kW
- DC Inverter : 12.5/14.0/15.0 kW
- 3 Phase DC Inverter : 12.5/14.0/15.0 kW
- High efficiency and low noise
- Choice of various indoor units



Model	Indoor Unit		UU36WHU31	UU42WHU31	UU48WHU31
Cooling Capacity 1.	Min-Rated-Max	kW	4.80-10.00-14.10	5.00-12.50-15.00	5.60-13.40-16.00
Heating Capacity 1.	Min-Rated-Max	kW	5.20-11.20-14.50	5.60-14.00-17.60	6.60-15.50-18.50
Twin Cassette Units	Model		UT18H.NP1 x2	UT21H.NP1 x2	UT24H.NN1 x2
Power Input	Cooling/Heating	kW	2.98 / 2.98	4.15 / 4.15	4.15 / 4.64
EER / COP		W/W	3.36 / 3.76	3.01 / 3.37	3.23 / 3.34
Energy Efficiency Class	Cooling/Heating		A / A	B / C	A / C
Twin Ducted Units	Model		UB18H.NG1 x2	UB21H.NG1 x2	UB24H.NG1 x2
Power Input	Cooling (Rated)	kW	2.93 / 3.21	3.88 / 3.9	3.88 / 4.4
EER		W/W	3.41 / 3.49	3.22 / 3.59	3.45 / 3.52
Energy Efficiency Class	Cooling/Heating		A / B	A / B	A / B
Twin Ceiling Suspended Units	Model		UV18H.NJ1 x2	UV21H.NK1 x2	UV24H.NK1 x2
Power Input	Cooling (Rated)	kW	3.2 / 3.5	4.33 / 4.8	4.33 / 4.8
EER		W/W	3.13 / 3.2	2.89 / 2.92	3.09 / 3.23
Energy Efficiency Class	Cooling/Heating		B / C	C / D	B / C
Triple Cassette Units	Model		UT12H.NP1 x3	UT18H.NP1 x3	UT18H.NP1 x3
Power Input	Cooling/Heating	kW	3.39 / 3.39	4.47 / 4.47	4.47 / 4.47
EER / COP		W/W	2.95 / 3.3	2.8 / 3.13	3 / 3.47
Energy Efficiency Class	Cooling/Heating		C / C	C / D	C / B
Triple Ducted Units	Model		N/A	UB18H.NG1 x3	UB18H.NG1 x3
Power Input	Cooling (Rated)	kW	- / -	4.4 / 4.82	4.4 / 4.98
EER		W/W	- / -	2.84 / 2.90	3.05 / 3.52
Energy Efficiency Class	Cooling/Heating		- / -	C / D	B / B
Triple Ceiling Suspended Units	Model		N/A	UV18H.NJ1 x3	UV18H.NJ1 x3
Power Input	Cooling (Rated)	kW	- / -	4.74 / 4.98	4.74 / 4.8
EER		W/W	- / -	2.64 / 2.81	2.83 / 3.11
Energy Efficiency Class	Cooling/Heating		- / -	D / D	C / D
Quad Cassette Units	Model		N/A	UT12H.NP1 x4	UT12H.NP1 x4
Power Input	Cooling/Heating	kW	- / -	4.52 / 4.64	4.52 / 4.52
EER / COP		W/W	- / -	2.77 / 3.02	2.96 / 3.43
Energy Efficiency Class	Cooling/Heating		- / -	D / D	C / B
Accessory Options	Wired Remote (for UV Models)		PQRCVSLOQW	PQRCVSLOQW	PQRCVSLOQW
	Distribution Pipe Kit		PMUB111A	PMUB111A	PMUB111A
	Twin		PMUB111A	PMUB111A	PMUB111A
	Triple		PMUB111A	PMUB111A	PMUB111A
	Quad		PMUB111A	PMUB111A	PMUB111A
Model	Outdoor Unit		UU36WH U31	UU42WH U31	UU48WH U31
Power Supply	Ø / V / Hz		1 / 220-240 / 50	1 / 220-240 / 50	1 / 220-240 / 50
Running Current	Cooling/Heating	A per Ø	11.5 / 11.3	16.8 / 15.0	18.7 / 18.0
Starting Current	Cooling/Heating	A per Ø	< 11.5 / 11.3	< 16.8 / 15.0	< 18.7 / 18.0
Suggested Circuit Breaker	Type C	A per Ø	25	32	40
Power Supply to...			Outdoor	Outdoor	Outdoor
Interconnecting Cable			3-Core + Earth	3-Core + Earth	3-Core + Earth
Compressor	Type		Twin Rotary	Twin Rotary	Twin Rotary
Air Flow Rate	Outdoor, Max	m3/min	55 x2	55 x2	55 x2
Sound Level	Cooling/Heating	dB(A)±3	51 / 53	51 / 53	51 / 53
	Night Operation	dB(A)±3	47	47	47
Dimensions	Outdoor (WxHxD)	mm	950x1380x330	950x1380x330	950x1380x330
Net Weight	Outdoor	kg	103	103	103
Refrigerant & Charge	R410A	g	3600	3600	3600
Additional Refrigerant charge		g/m	40 (>7.5m)	40 (>7.5m)	40 (>7.5m)
Piping Connections	Liquid Side	mm (in)	9.52 (3/8)	9.52 (3/8)	9.52 (3/8)
	Gas Side	mm (in)	15.88 (5/8)	15.88 (5/8)	15.88 (5/8)
Piping Length (Min/Max)		m	5 / 75	5 / 75	5 / 75
Max. Elevation Difference		m	30	30	30
Accessory Options	PI485 Interface		PMNFP14A0	PMNFP14A0	PMNFP14A0

Note: 1. Capacities are based on the following conditions:
Cooling: - Indoor Temperature 27°C DB / 19°C WB
- Outdoor Temperature 35°C DB / 24°C WB
Heating: - Indoor Temperature 20°C DB / 15°C WB
- Outdoor Temperature 7°C DB / 6°C WB

Note: 2. Annual energy consumption: based on average use of 500 running hours per year at nominal condition

Synchro Systems

Three Phase



Features and Benefits

		Possible combination of indoor units								
		Installation scene								
		Duo			Trio			Quartet		
IDU : INDOOR UNIT ODU : OUT DOOR INUT BD : BRANCH DISTRIBUTOR UNIT REMO : WIRED REMOTE CONTROLLER										
OUTDOOR UNITS	Capacity (kW) Cooling Heating	Cassette	Duct	Ceiling & Floor	Cassette	Duct	Ceiling & Floor	Cassette	Duct	Ceiling & Floor
UU37WH U31	10.0 11.2	UT18H NP1 *2 UT18H NP1 *2	UB18H NG1 *2 UB18H NG1 *2	UV18H NJ1 *2 UV18H NJ1 *2	UT12H NP1 *3 UT12H NP1 *3	- -	- -	- -	- -	- -
UU43WH U31	12.5 14.0	UT21H NN1 *2 UT21H NN1 *2	UB21H NG1 *2 UB21H NG1 *2	UV21H NK1 *2 UV21H NK1 *2	UT18H NP1 *3 UT18H NP1 *3	UB18H NG1 *3 UB18H NG1 *3	UV18H NJ1 *3 UV18H NJ1 *3	UT12H NP1 *4 UT12H NP1 *4	- -	- -
UU49WH U31	13.4 15.5	UT24H NN1 *2 UT24H NN1 *2	UB24H NG1 *2 UB24H NG1 *2	UV24H NK1 *2 UV24H NK1 *2	UT18H NP1 *3 UT18H NP1 *3	UB18H NG1 *3 UB18H NG1 *3	UV18H NI1 *3 UV18H NI1 *3	UT12H NP1 *4 UT12H NP1 *4	- -	- -

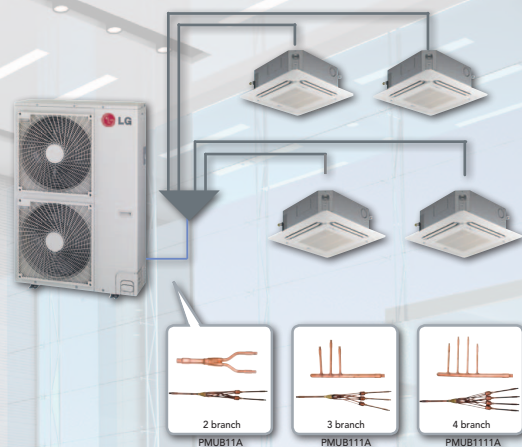
* When installing ceiling and floor type synchro combinations, use the wired remote controller (PVRCUSZ0). For DC inverter, Duct, Convertable (UV18~60) H inverter and others use PQRCVSLQW.

* In the case of cassettes or duct type synchro combinations, only one wired remote controller can be used in conjunction with the indoor units.

Synchro operation

Offering an economical solution as it uses 2, 3 or 4 indoor units with one outdoor unit. Each indoor unit runs the same cycle in the same mode (cooling or heating) providing the same air distribution all around the room (office or open plan office) even in irregular shaped spaces.

- Simultaneously On/Off (1 Cycle)
- Connect up to 4 indoor units
- Use simple branch piping
- H-Inverter : 10.0/12.5/13.4 kW
- DC Inverter : 12.5/14.0/15.0 kW
- 3 Phase DC Inverter : 12.5/14.0/15.0 kW
- High efficiency and low noise
- Choice of various indoor units



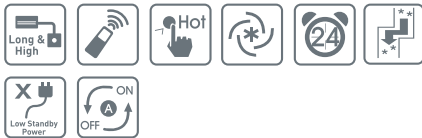
Model	Indoor Unit		UU37WHU31	UU43WHU31	UU49WHU31
Cooling Capacity ¹	Min-Rated-Max	kW	4.80-10.00-14.10	5.00-12.50-15.00	5.60-13.40-16.00
Heating Capacity ₊	Min-Rated-Max	kW	5.20-11.20-14.50	5.60-14.00-17.60	6.60-15.50-18.50
Twin Cassette Units	Model		UT18H.NP1 x2	UT21H.NP1 x2	UT24H.NN1 x2
Power Input	Cooling/Heating	kW	2.98 / 2.98	4.15 / 4.15	4.15 / 4.64
EER / COP		W/W	3.36 / 3.76	3.01 / 3.37	3.23 / 3.34
Energy Efficiency Class	Cooling/Heating		A / A	B / C	A / C
Twin Ducted Units	Model		UB18H.NG1 x2	UB21H.NG1 x2	UB24H.NG1 x2
Power Input	Cooling (Rated)	kW	2.93 / 3.21	3.88 / 3.9	3.88 / 4.4
EER		W/W	3.41 / 3.49	3.22 / 3.59	3.45 / 3.52
Energy Efficiency Class	Cooling/Heating		A / B	A / B	A / B
Twin Ceiling Suspended Units	Model		UV18H.NJ1 x2	UV21H.NK1 x2	UV24H.NK1 x2
Power Input	Cooling (Rated)	kW	3.2 / 3.5	4.33 / 4.8	4.33 / 4.8
EER		W/W	3.13 / 3.2	2.89 / 2.92	3.09 / 3.23
Energy Efficiency Class	Cooling/Heating		B / C	C / D	B / C
Triple Cassette Units	Model		UT12H.NP1 x3	UT18H.NP1 x3	UT18H.NP1 x3
Power Input	Cooling/Heating	kW	3.39 / 3.39	4.47 / 4.47	4.47 / 4.47
EER / COP		W/W	2.95 / 3.3	2.8 / 3.13	3 / 3.47
Energy Efficiency Class	Cooling/Heating		C / C	C / D	C / B
Triple Ducted Units	Model		N/A	UB18H.NG1 x3	UB18H.NG1 x3
Power Input	Cooling (Rated)	kW	- / -	4.4 / 4.82	4.4 / 4.82
EER		W/W	- / -	2.84 / 2.90	3.05 / 3.22
Energy Efficiency Class	Cooling/Heating		- / -	C / D	B / C
Triple Ceiling Suspended Units	Model		N/A	UV18H.NJ1 x3	UV18H.NJ1 x3
Power Input	Cooling (Rated)	kW	- / -	4.74 / 4.98	4.74 / 4.98
EER		W/W	- / -	2.64 / 2.81	2.83 / 3.11
Energy Efficiency Class	Cooling/Heating		- / -	D / D	C / D
Quad Cassette Units	Model		N/A	UT12H.NP1 x4	UT12H.NP1 x4
Power Input	Cooling/Heating	kW	- / -	4.52 / 4.64	4.52 / 3.43
EER / COP		W/W	- / -	2.77 / 3.02	2.96 / 3.43
Energy Efficiency Class	Cooling/Heating		- / -	D / D	C / B
Accessory Options	Wired Remote (for UV Models)		PQRCVSLOQW	PQRCVSLOQW	PQRCVSLOQW
	Distribution Pipe Kit	Twin	PMUB111A	PMUB111A	PMUB111A
		Triple	PMUB111A	PMUB111A	PMUB111A
		Quad	PMUB111A	PMUB111A	PMUB111A
Model	Outdoor Unit		UU37WH U31	UU43WH U31	UU49WH U31
Power Supply	Ø / V / Hz		3 / 380-415 / 50	3 / 380-415 / 50	3 / 380-415 / 50
Running Current	Cooling/Heating	A per Ø	4.2 / 4.1	6.0 / 5.7	6.7 / 6.5
Starting Current	Cooling/Heating	A per Ø	< 4.2 / 4.1	< 6.0 / 5.7	< 6.7 / 6.5
Suggested Circuit Breaker	Type C	A per Ø	10	16	16
Power Supply to...			Outdoor	Outdoor	Outdoor
Interconnecting Cable			3-Core + Earth	3-Core + Earth	3-Core + Earth
Compressor	Type		Twin Rotary	Twin Rotary	Twin Rotary
Air Flow Rate	Outdoor, Max	m3/min	55 x2	55 x2	55 x2
Sound Level	Cooling/Heating	dB(A)±3	51 / 53	51 / 53	51 / 53
	Night Operation	dB(A)±3	47	47	47
Dimensions	Outdoor (WxHxD)	mm	950x1380x330	950x1380x330	950x1380x330
Net Weight	Outdoor	kg	103	103	103
Refrigerant & Charge	R410A	g	3600	3600	3600
Additional Refrigerant charge		g/m	40 (>7.5m)	40 (>7.5m)	40 (>7.5m)
Piping Connections	Liquid Side	mm (in)	9.52 (3/8)	9.52 (3/8)	9.52 (3/8)
	Gas Side	mm (in)	15.88 (5/8)	15.88 (5/8)	15.88 (5/8)
Piping Length (Min/Max)		m	5 / 75	5 / 75	5 / 75
Max. Elevation Difference		m	30	30	30
Accessory Options	PI485 Interface		PMNFP14A0	PMNFP14A0	PMNFP14A0

Note: 1. Capacities are based on the following conditions:
Cooling: - Indoor Temperature 27°C DB / 19°C WB
- Outdoor Temperature 35°C DB / 24°C WB
Heating: - Indoor Temperature 20°C DB / 15°C WB
- Outdoor Temperature 7°C DB / 6°C WB

Note: 2. Annual energy consumption: based on average use of 500 running hours per year at nominal condition

Floor Standing Units

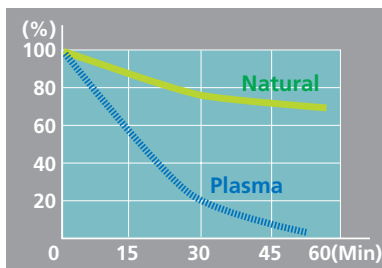
PO3AH
PO5AH
PO8AH



Features and Benefits

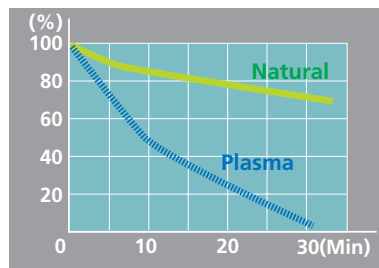
PLASMA

The PLASMA Air Purifying System inside the air conditioner removes microscopic contaminants and dust to eliminate offensive odours. It can also be used as an air-purifying unit even when the air-cooling function is switched off.



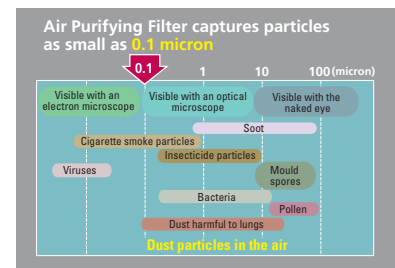
Dust reduction

Particles from 5 cigarettes in a sealed room removed by LG Plasma Air Purifying System.



Deodorisation

LG's Plasma unit effectively removes high concentration tobacco odours.

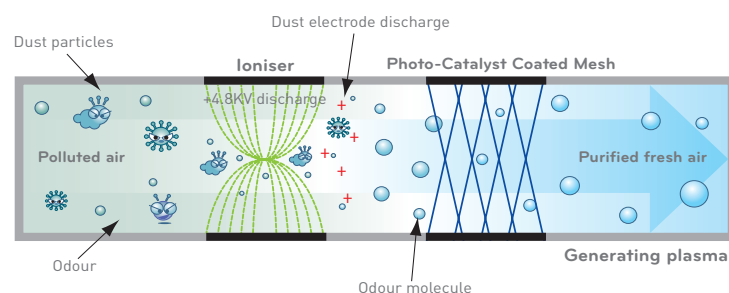


Anti-allergy in clinical trials

The plasma unit has a satisfaction rate of 82%. Evaluated by CSIRO Australia (DBCE Doc 98/204) Tested by Korean Food Research Institute and Japanese Environmental Centre and Yonsei Univ. College of Medicine. (Allergy Research Lab.)

Anti-bacteria filter

It removes dust in the air as well as bacteria to improve the indoor atmosphere.



Floor Standing Units



P03AH
P05AH
P08AH



P03AH



P05AH



P08AH

Specifications

Model	Indoor Unit		P03AH.NR1 [APNZ286R30]	P05AH.NR0 [APNZ488TC0]	P08AH.NF1 [APNZ728FA1]
	Outdoor Unit		P03AH.UR1 [APUZ286R30]	P05AH.UR0 [APUZ488TC0]	P08AH.UF1 [APUZ728FA1]
Main Power Supply (to Outdoor Unit)	Ø, v, Hz		1, 220-240, 50	3, 380-415, 50	3, 380-415, 50
Nominal Capacity	Cooling	Btu/h	27,800	46,000	68,200
		kW	8.14	13.48	20
	Heating	Btu/h	27,800	48,000	72,000
		kW	8.14	14.06	21.10
Nom. Input Power	Electric Heater	kW	2.00	4.00	10.00
		kW	2.80	5.30	7.00
		kW	2.80	5.00	6.00
Running Current	Cooling	kW	2.00	4.00	10.00
		A	13.0	9.5	11.1
		A	13.0	9.0	10.0
EER	Electric Heater	A	8.7	18.2	15.2 A/Phase
		w/w	2.91	2.54	2.86
		w/w	2.91	2.81	3.52
ENERGY Efficiency Class	Cooling/Heating		C / D	E / D	C / B
Air Flow Rate	Indoor (H / M / L)	M ³ /Min	19 / 16 / 13	30 / 28 / 26	57 / - / 48
	Outdoor (H)	M ³ /Min	58	104	135
Sound Level (Sound Press @1m)	Indoor (H / M / L) dB(A) +3		50 / 45 / 40	53 / 51 / 48	62 / - / 59
	Outdoor (H) dB(A) +3		58	58	63
Dehumidification Rate		l/hr	3.3	6.0	8.5
Dimensions (W * H * D)	Indoor	mm (inch)	570*1820*310 (22.4*71.7*12.2)	590*1850*440 (23.2*72.8*17.3)	1050*1880*495 (41.3*74.0*19.5)
		mm (inch)	870*808*320 (34.3*31.8*12.6)	900*1165*370 (35.4*45.9*14.6)	950*1380*330 (37.4*54.3*13.0)
	Outdoor	mm (inch)			
Net Weight	Indoor	kg	33	60	132
	Outdoor	kg	63	90	113
Piping Sizes	Liquid	mm(inch)	9.52 (3/8)	9.52 (3/8)	9.52 (3/8)
	Gas	mm(inch)	15.88 (5/8)	19.05 (3/4)	19.05 (3/4)
	Drain Hose	mm	21.5	40	25
Max. Piping Length / Height		m	30 / 20	40 / 25	40 / 25
Refrigerant	Type		R410A	R410A	R410A
	Charge	g	2200	2900	3500
	Additional >7.5m	g/m	30	40	60
Interconnecting Cable	Indoor Unit		4-Core + Earth	4-Core + Earth	5-Core + Earth
	Electric Heater		2-Core	2-Core	4-Core + Earth
Recommended Fuse	Without Elect.Htr	A	30A	20 A/Phase	25 A/Phase
	(With Elect. Htr.)	A	(40A)	(40 A/Phase)	(45 A/Phase)

Note: 1. Capacities are based on the following conditions:
Cooling: - Indoor Temperature 27°C DB /19°C WB
- Outdoor Temperature 35°C DB /24°C WB
Heating: - Indoor Temperature 20°C DB / 15°C WB
- Outdoor Temperature 7°C DB / 6°C WB

Note: 2. Annual energy consumption: based on average use of 500 running hours per year at nominal condition